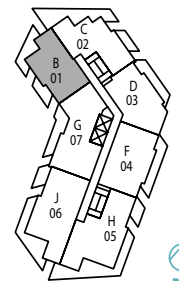
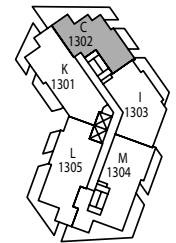
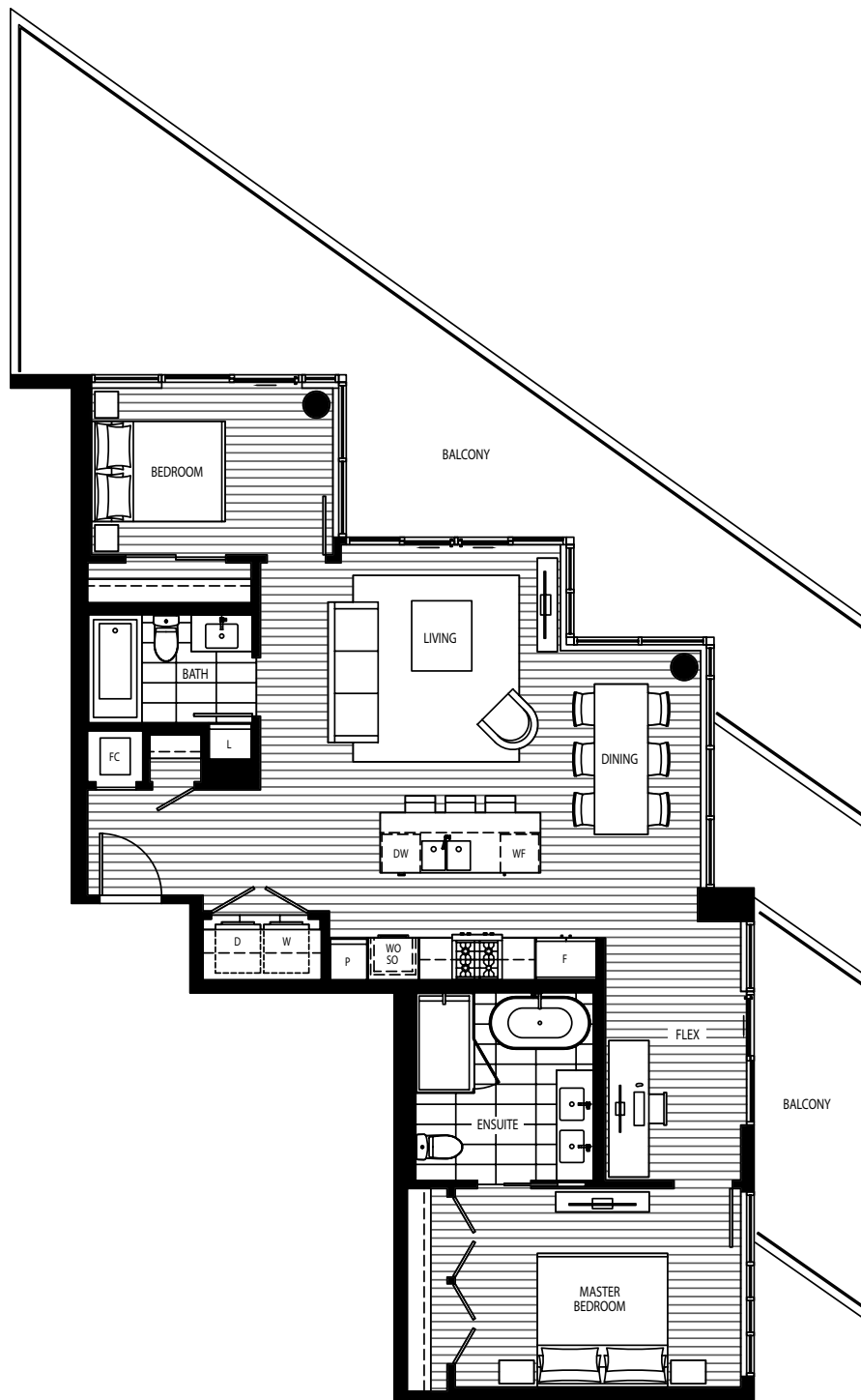


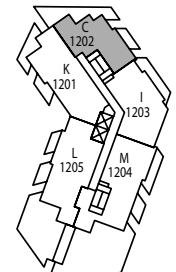
LEVEL 2



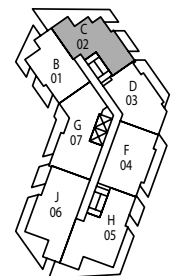
LEVEL 3-11



LEVEL 13

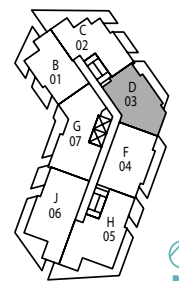
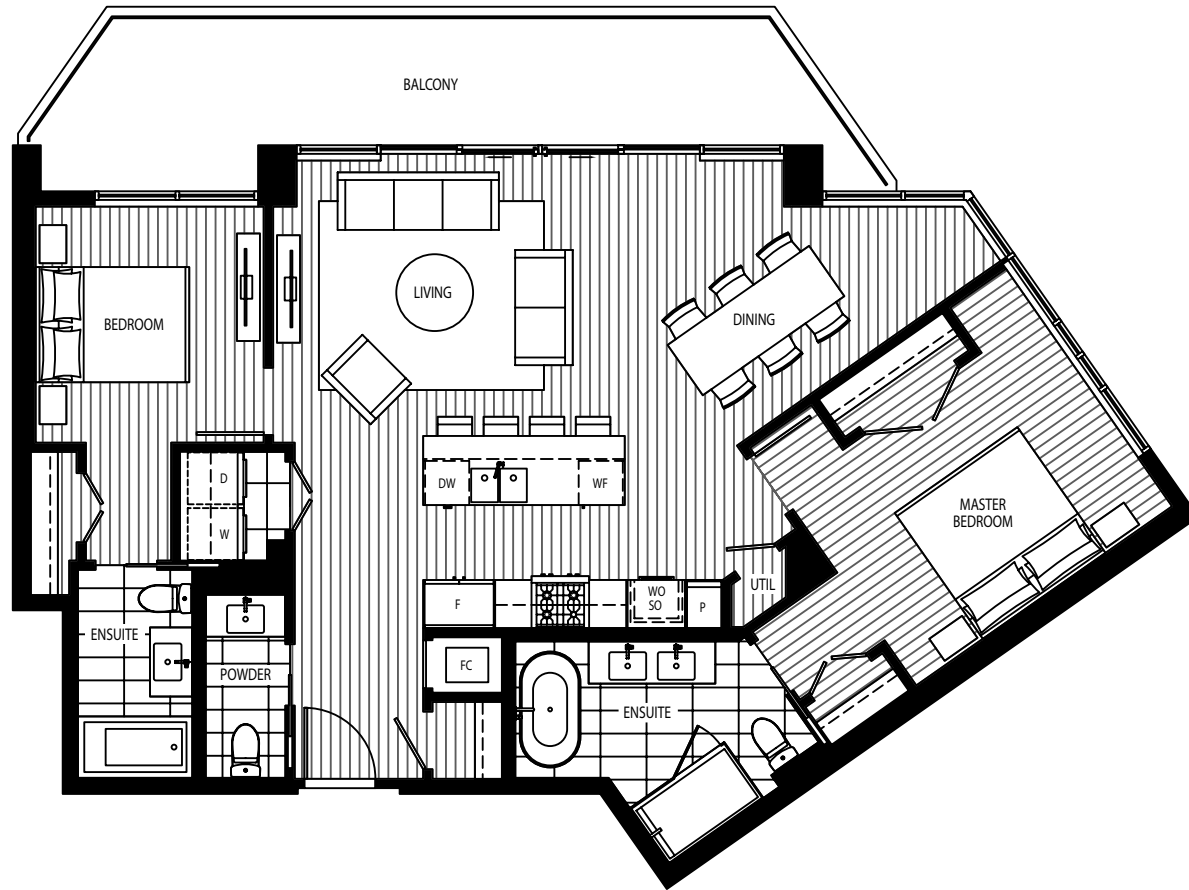


LEVEL 12

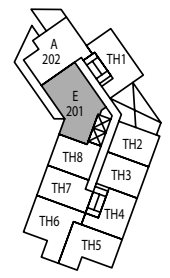
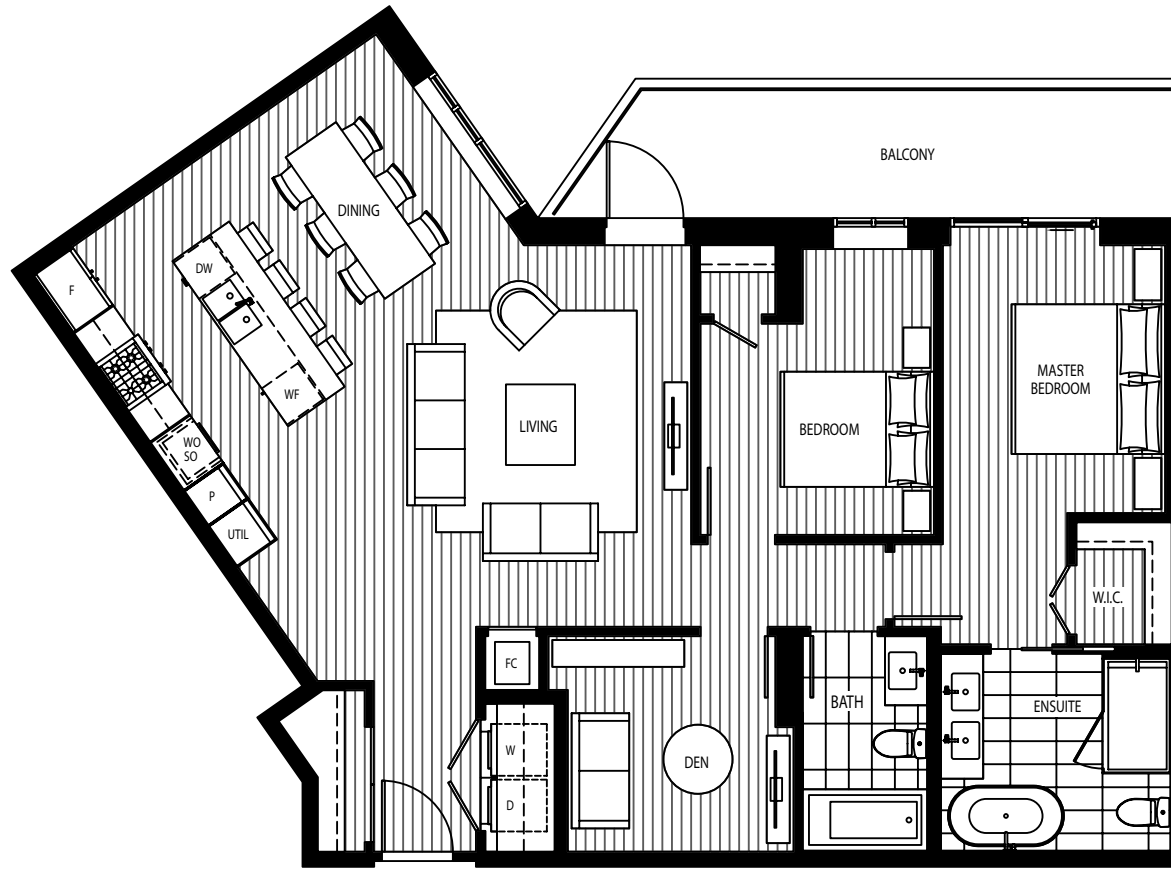


LEVEL 3-11



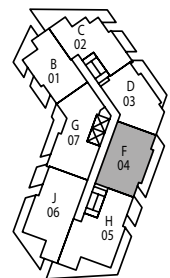


LEVEL 3-11



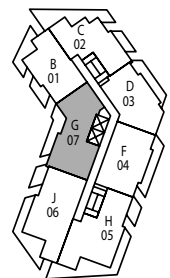
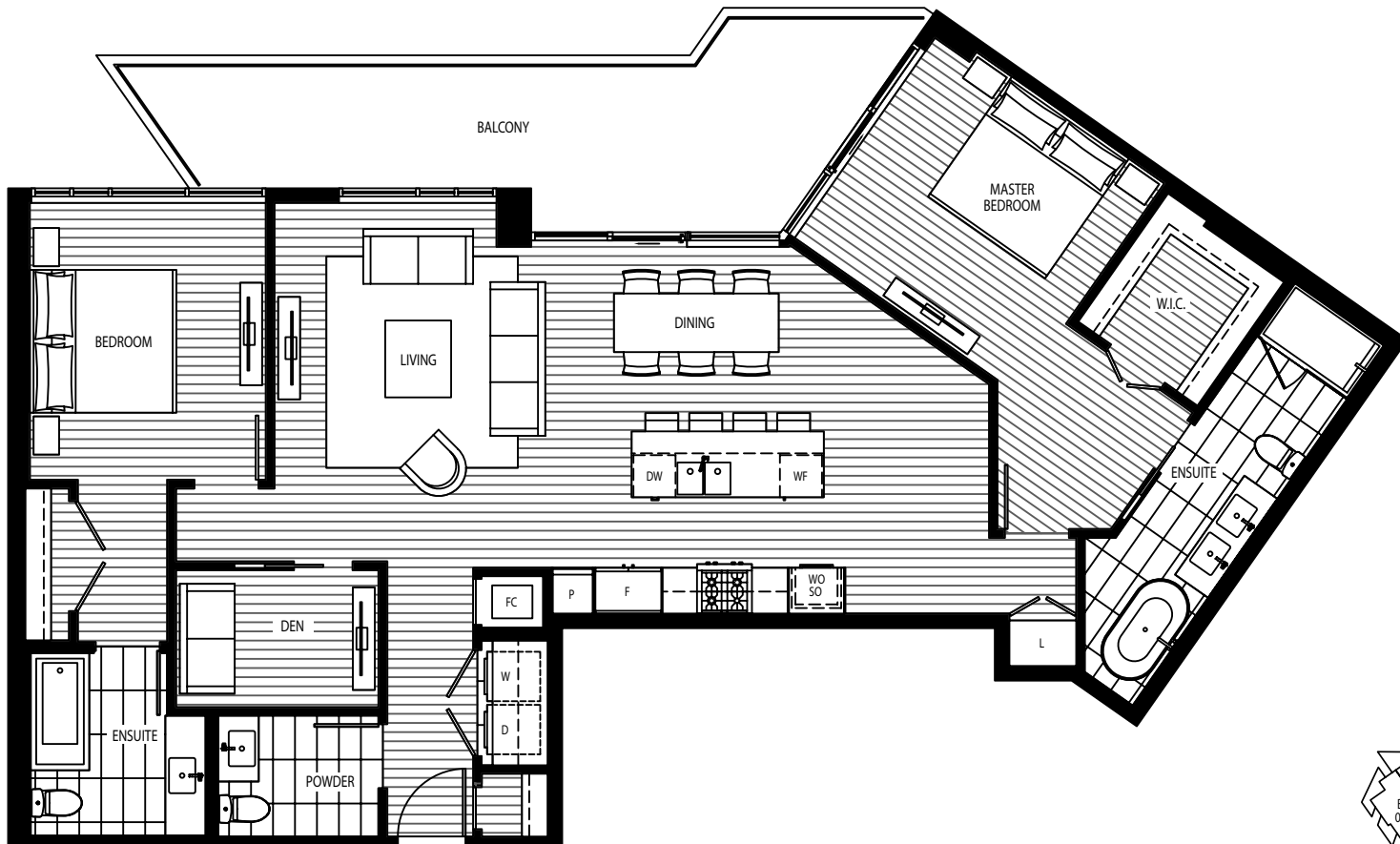
LEVEL 2





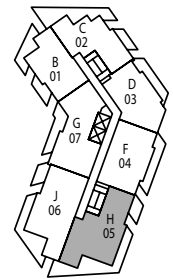
LEVEL 3-11



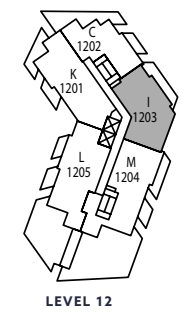
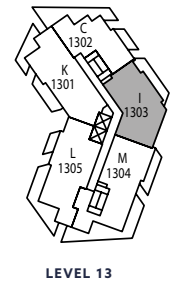
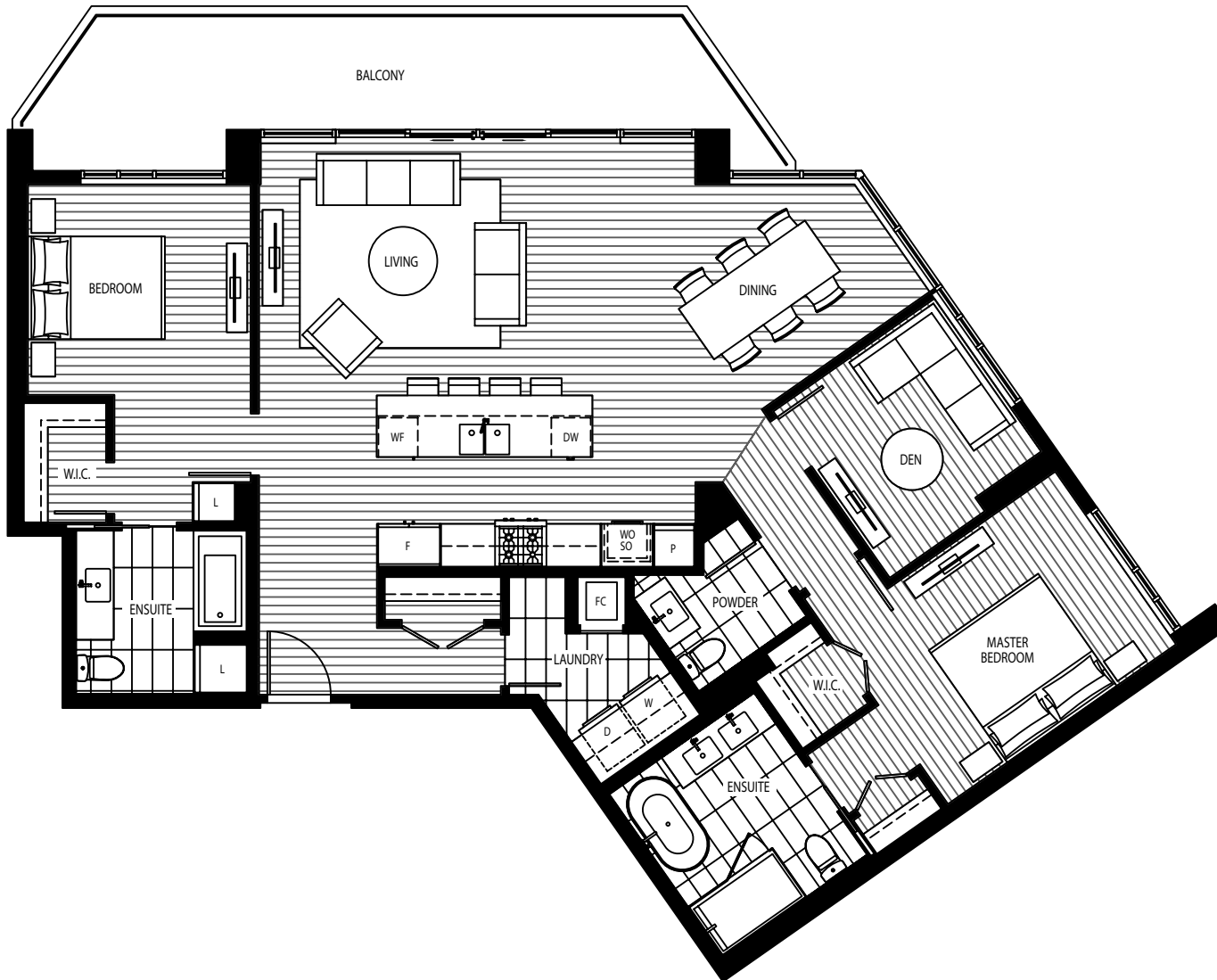


LEVEL 3-11

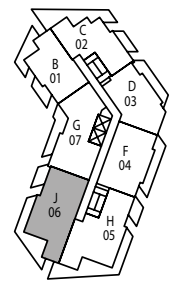




LEVEL 3-11

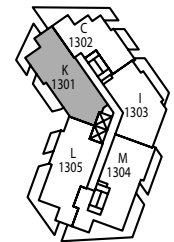


The Developer reserves the right in its sole discretion to make modifications or changes to the building design, floor plans, project designs, specifications, finishes, features and dimensions. Square footages are approximate and have been calculated from architectural drawings. Actual final dimensions following completion of construction may vary from those set out herein. E. & O.E. Marcon Thrift (GP) Ltd.

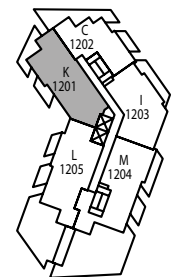


LEVEL 3-11





LEVEL 13



LEVEL 12

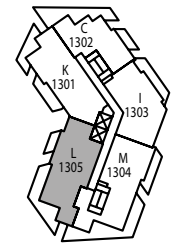
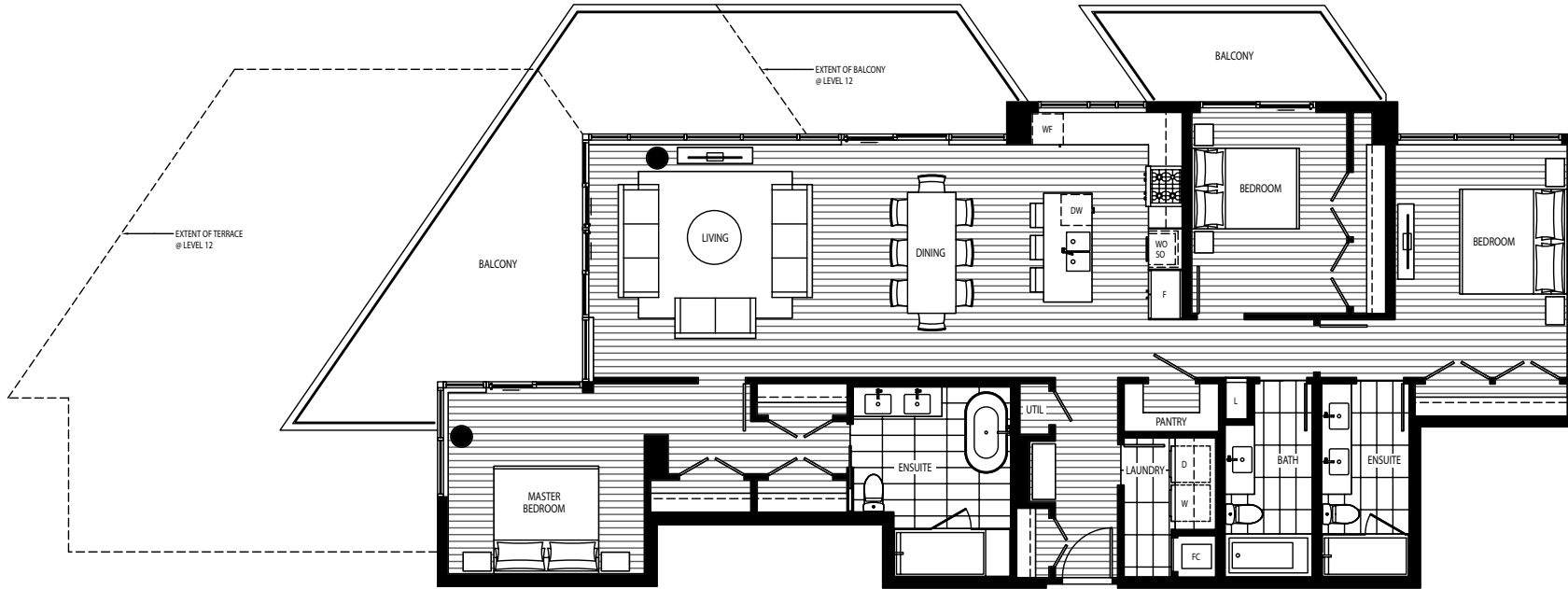


PLAN L

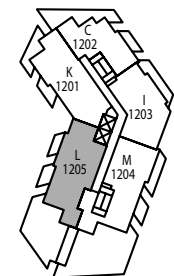
3 Bedroom
1,701 sq.ft.

Balcony (L12): 959 sq.ft.

Balcony (L13): 525 sq.ft.



LEVEL 13



LEVEL 12



The Developer reserves the right in its sole discretion to make modifications or changes to the building design, floor plans, project designs, specifications, finishes, features and dimensions. Square footages are approximate and have been calculated from architectural drawings. Actual final dimensions following completion of construction may vary from those set out herein. E. & O.E. Marcon Thrift (GP) Ltd.

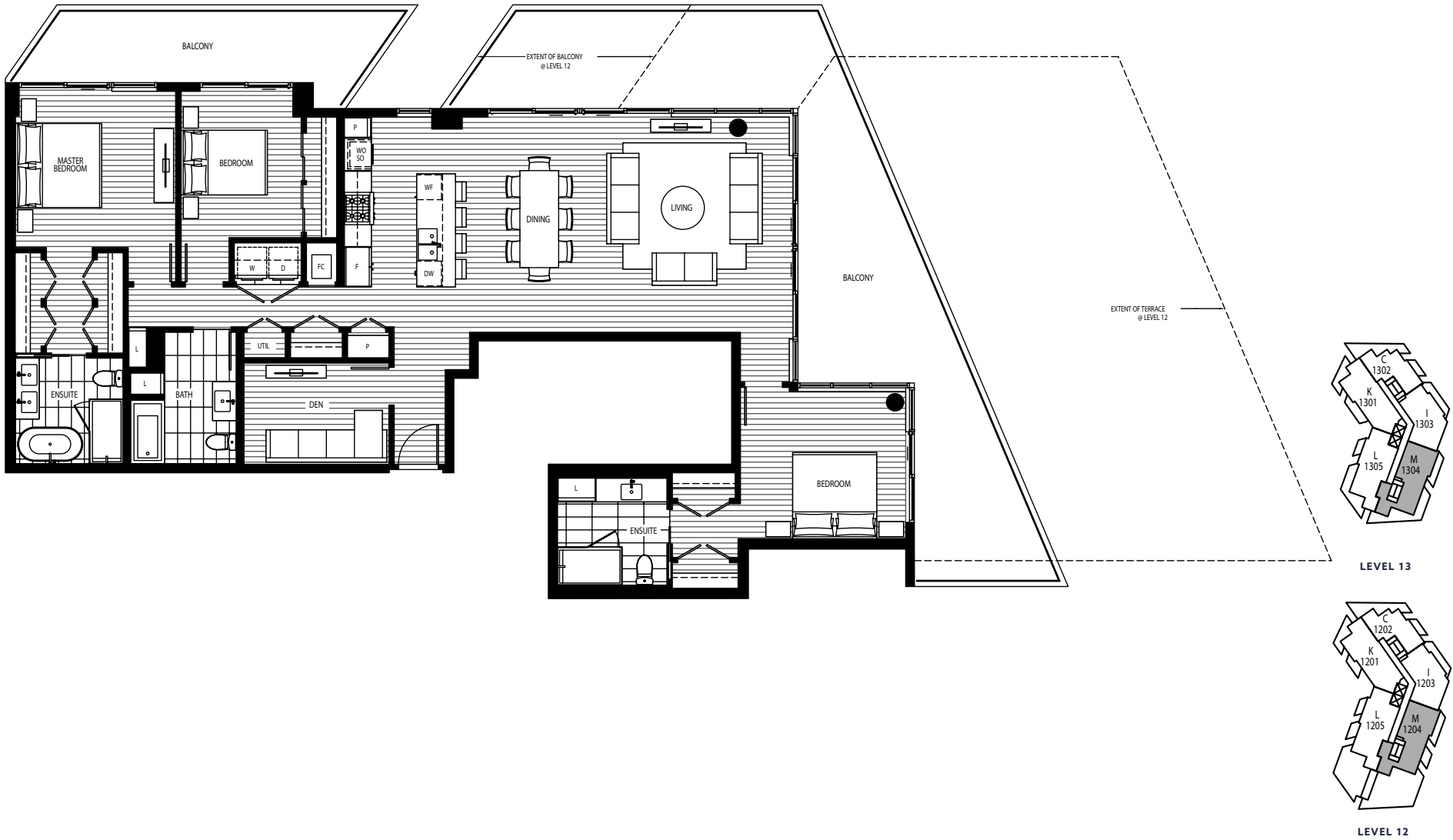


PLAN M

3 Bedroom + Den
1,798 sq.ft.

Balcony (L12): 1,411 sq.ft.

Balcony (L13): 745 sq.ft.



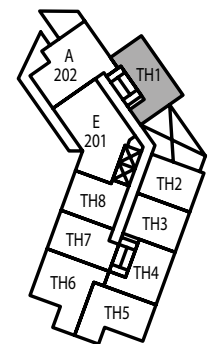
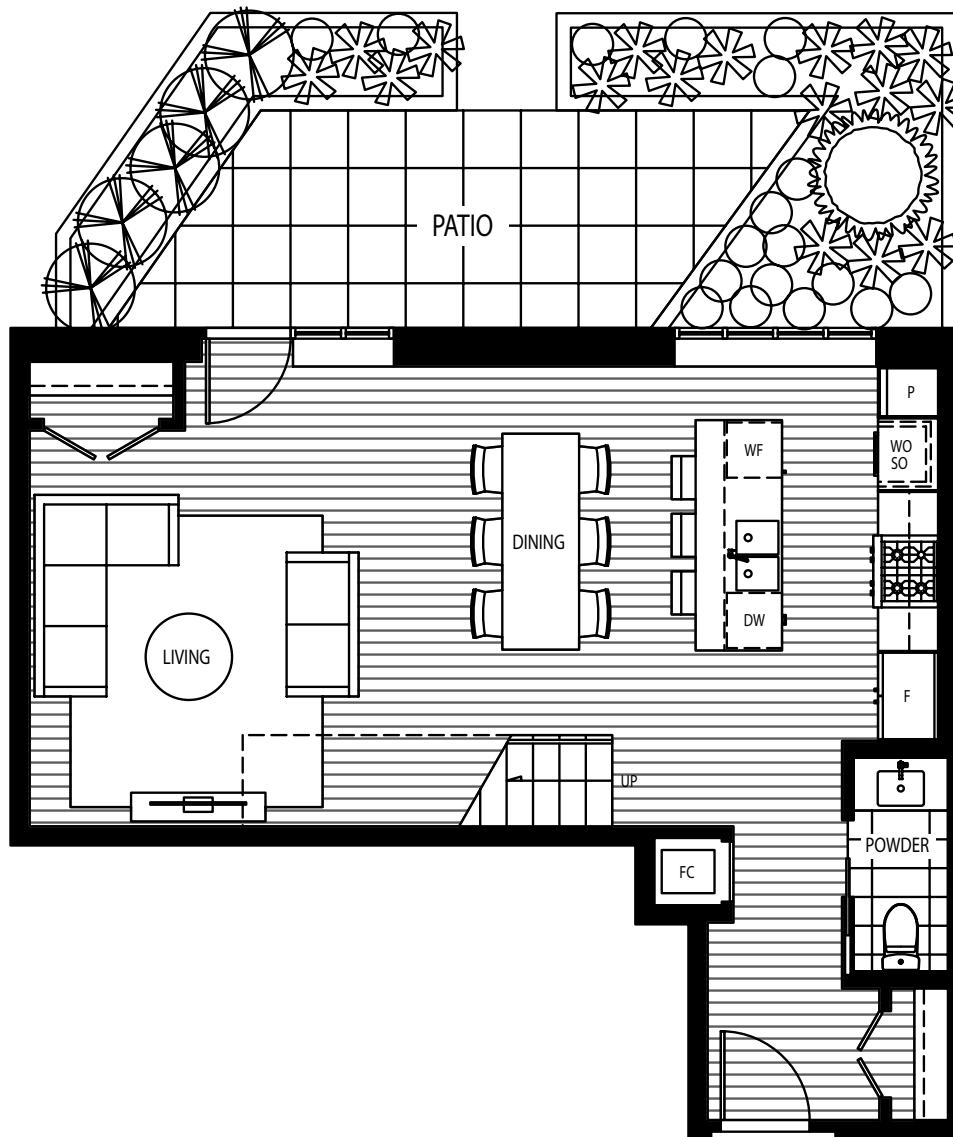
SEMIAH

by MARCON

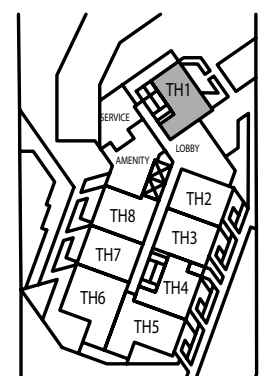
OVERLOOKING
THE BAY

TOWNHOUSE 1

2 Bedroom
1,518 sq.ft.
Patio: 143 sq.ft.



LEVEL 2



LEVEL 1



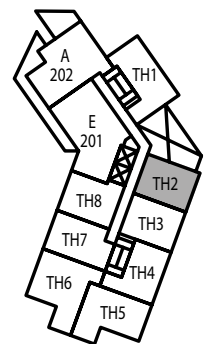
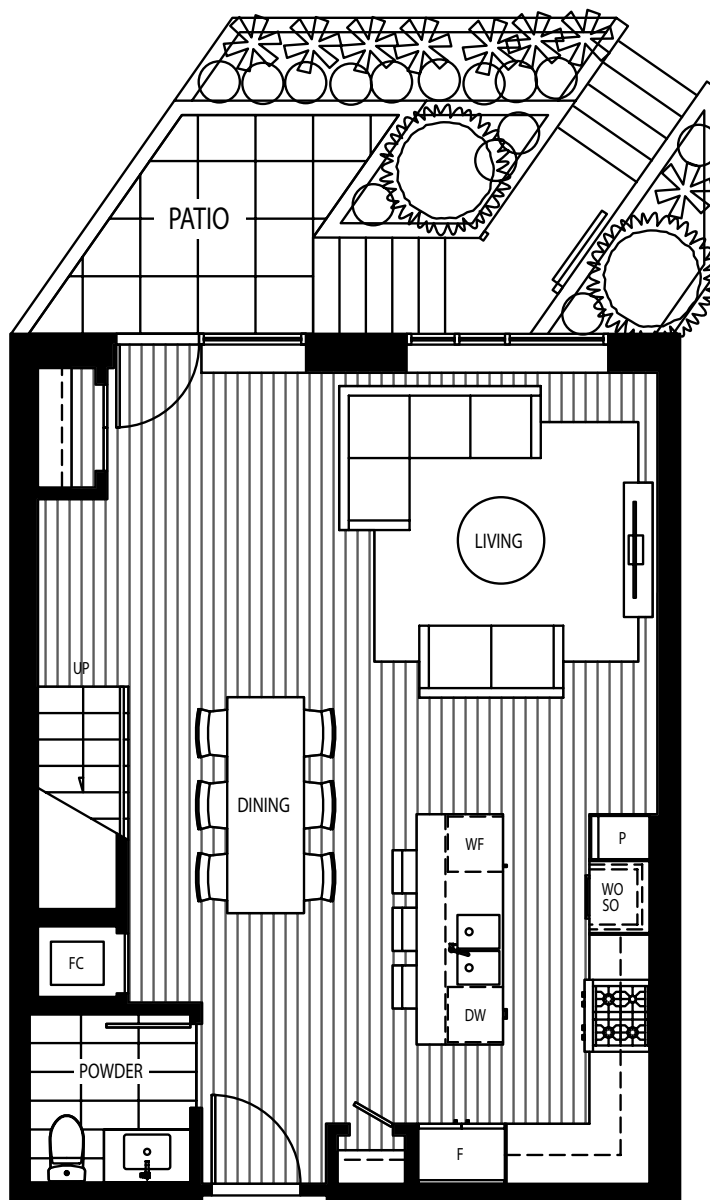
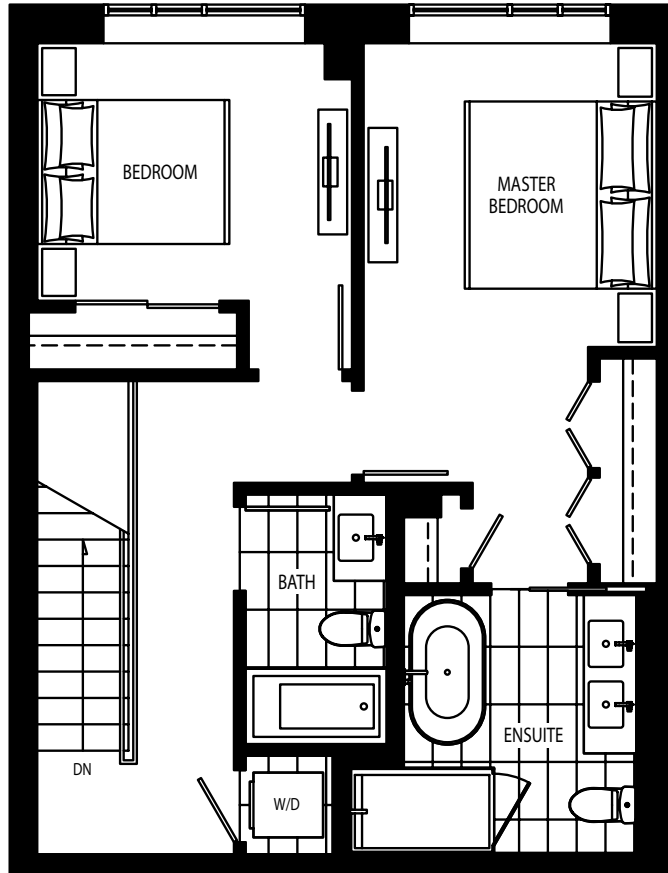
SEMIAH

by MARCON

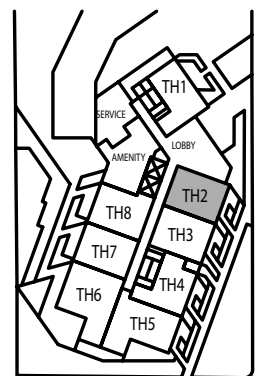
OVERLOOKING
THE BAY

TOWNHOUSE 2

2 Bedroom
1,367 sq.ft.
Patio: 74 sq.ft.



LEVEL 2



LEVEL 1



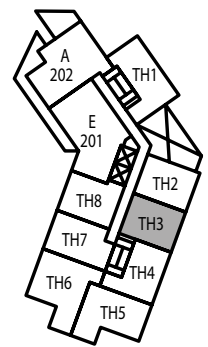
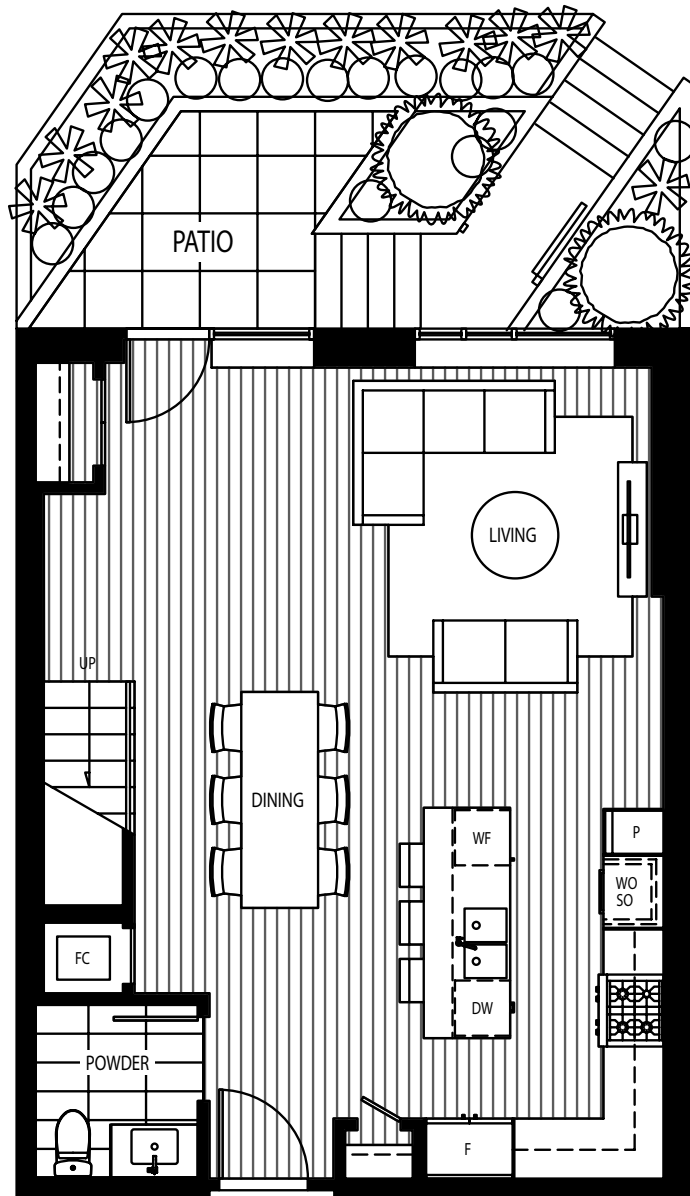
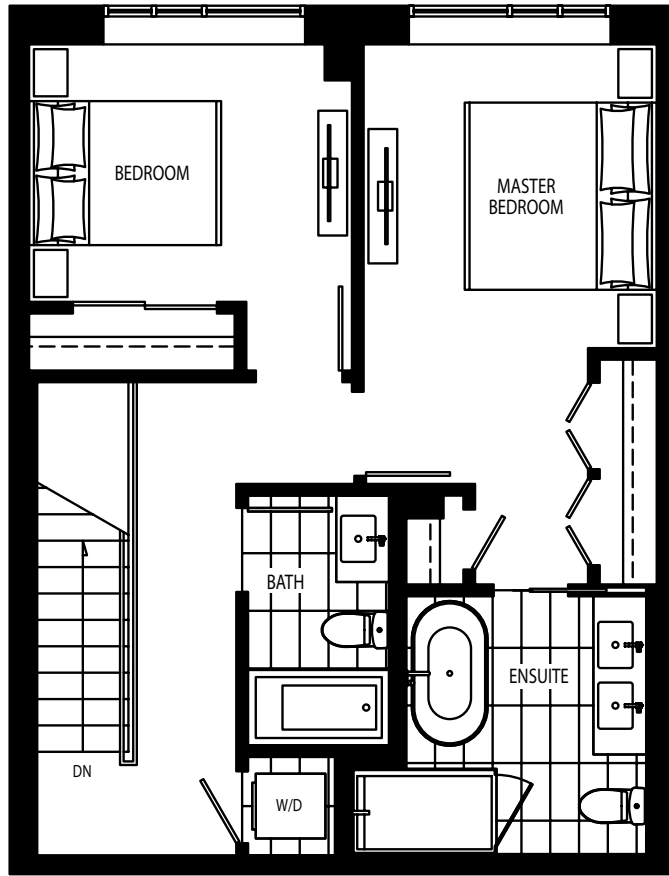
SEMIAH

by MARCON

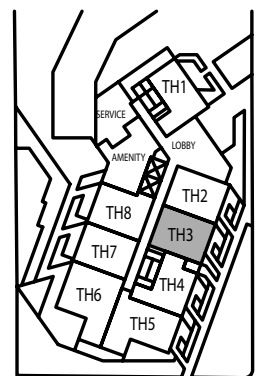
OVERLOOKING
THE BAY

TOWNHOUSE 3

2 Bedroom
1,356 sq.ft.
Patio: 73 sq.ft.



LEVEL 2



LEVEL 1



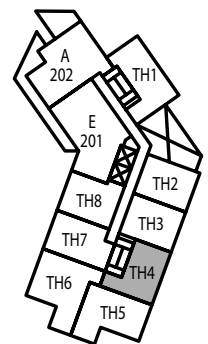
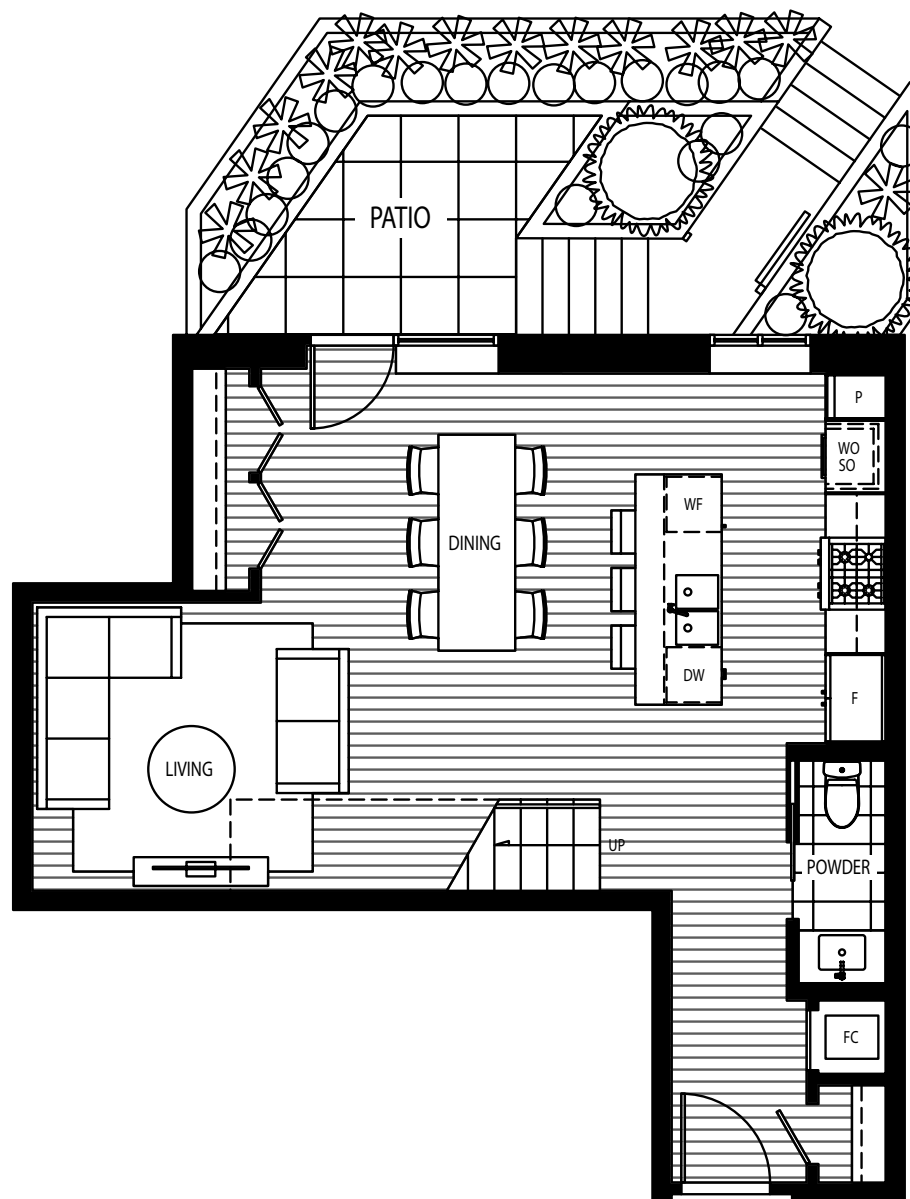
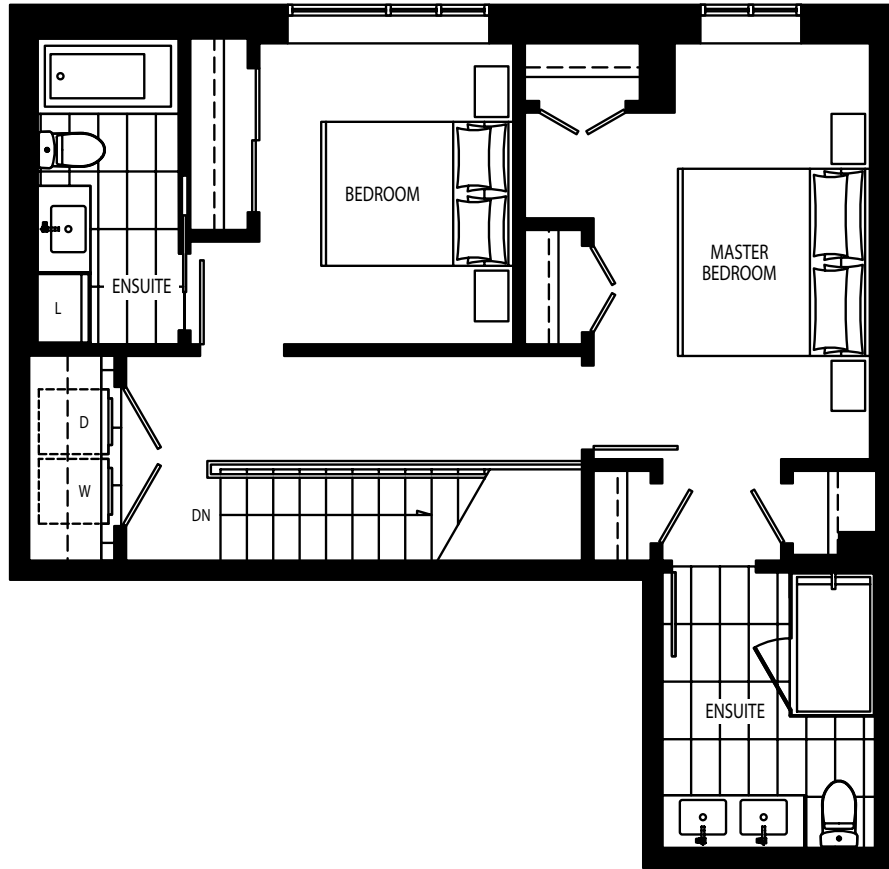
SEMIAH

OVERLOOKING
THE BAY

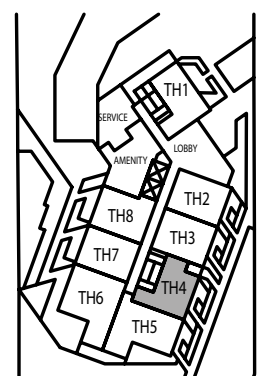
by MARCON

TOWNHOUSE 4

2 Bedroom
1,324 sq.ft.
Patio: 78 sq.ft.



LEVEL 2



LEVEL 1



SEMIAH

OVERLOOKING THE BAY

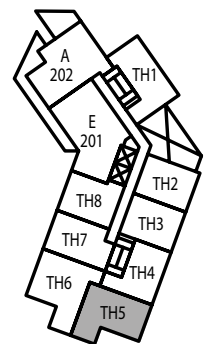
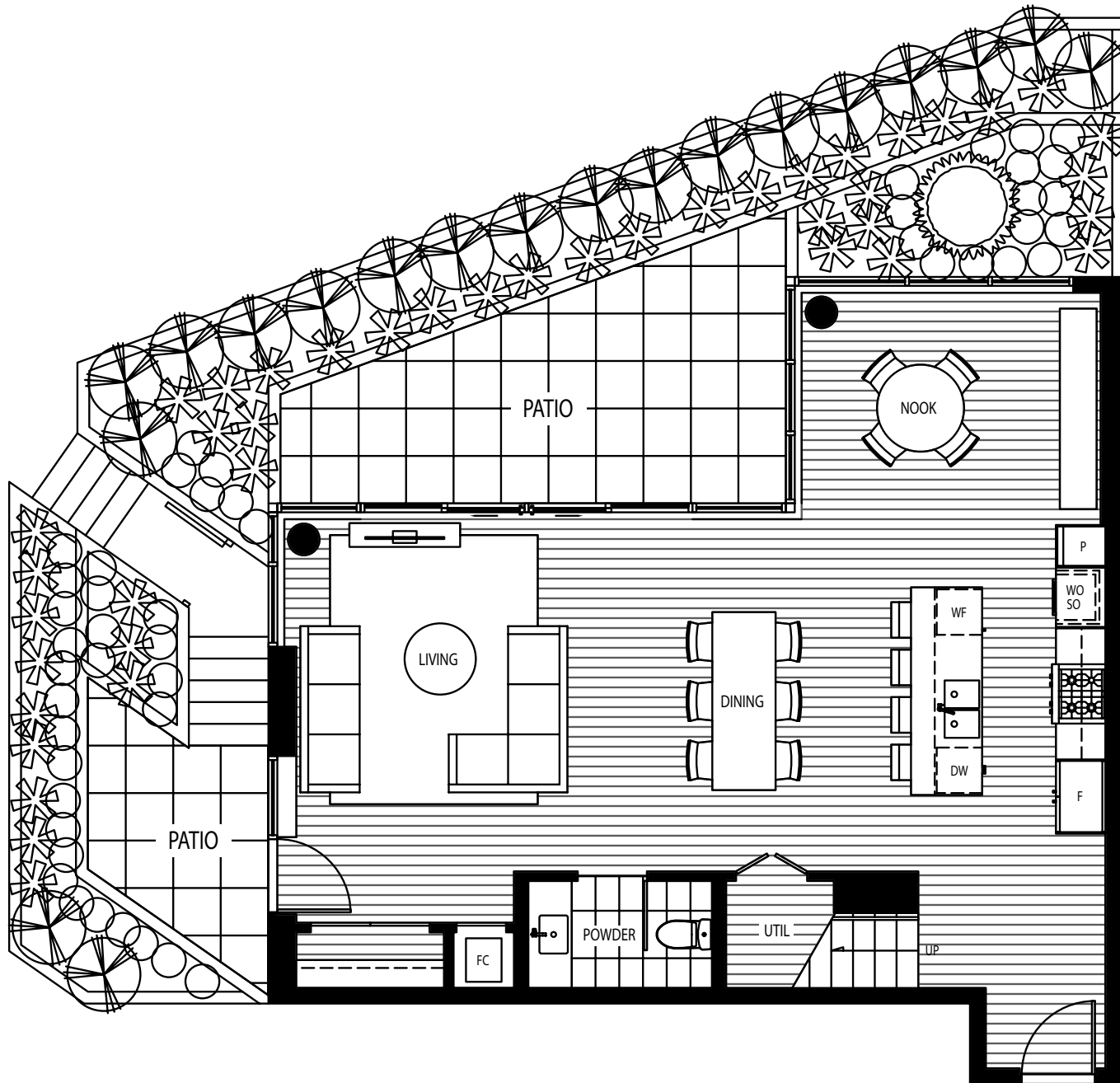
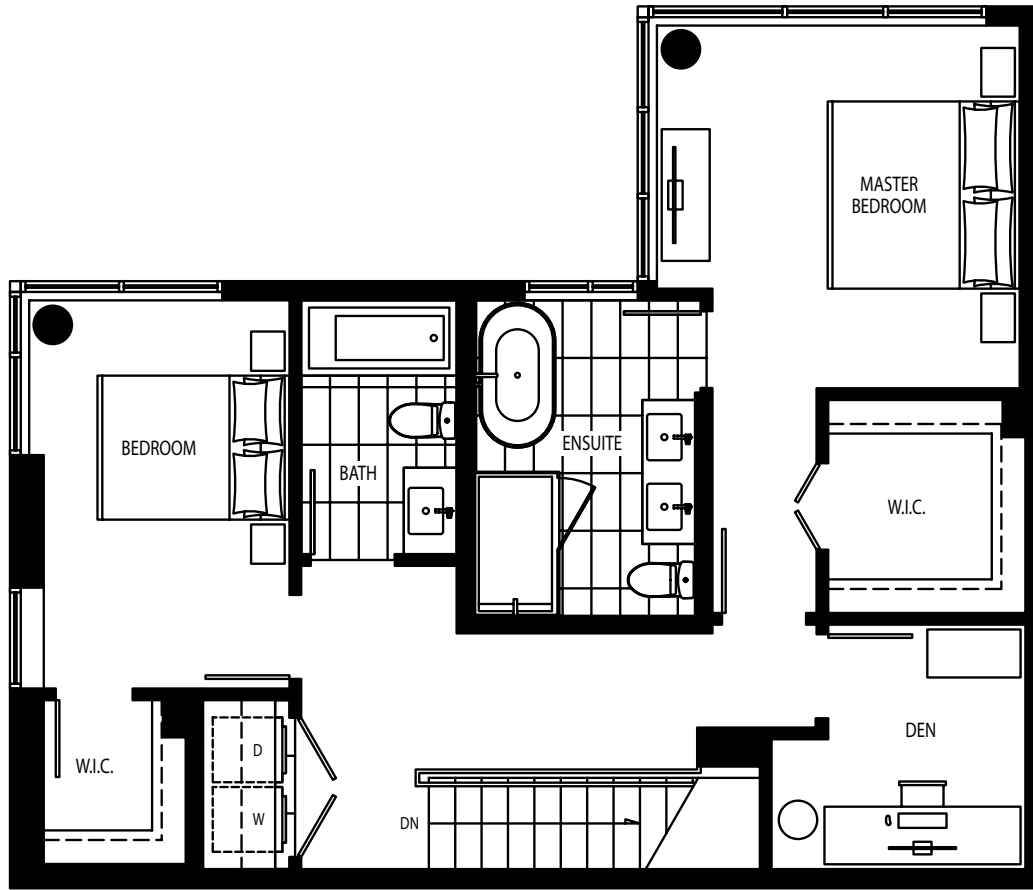
by MARCON

TOWNHOUSE 5

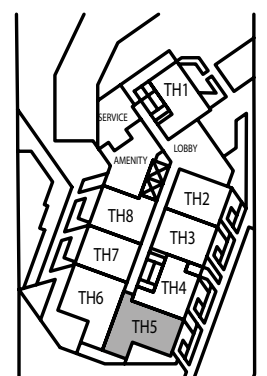
2 Bedroom + Den

1,744 sq.ft.

Patio: 260 sq.ft.



LEVEL 2



LEVEL 1



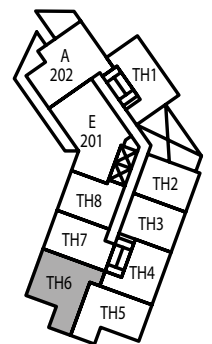
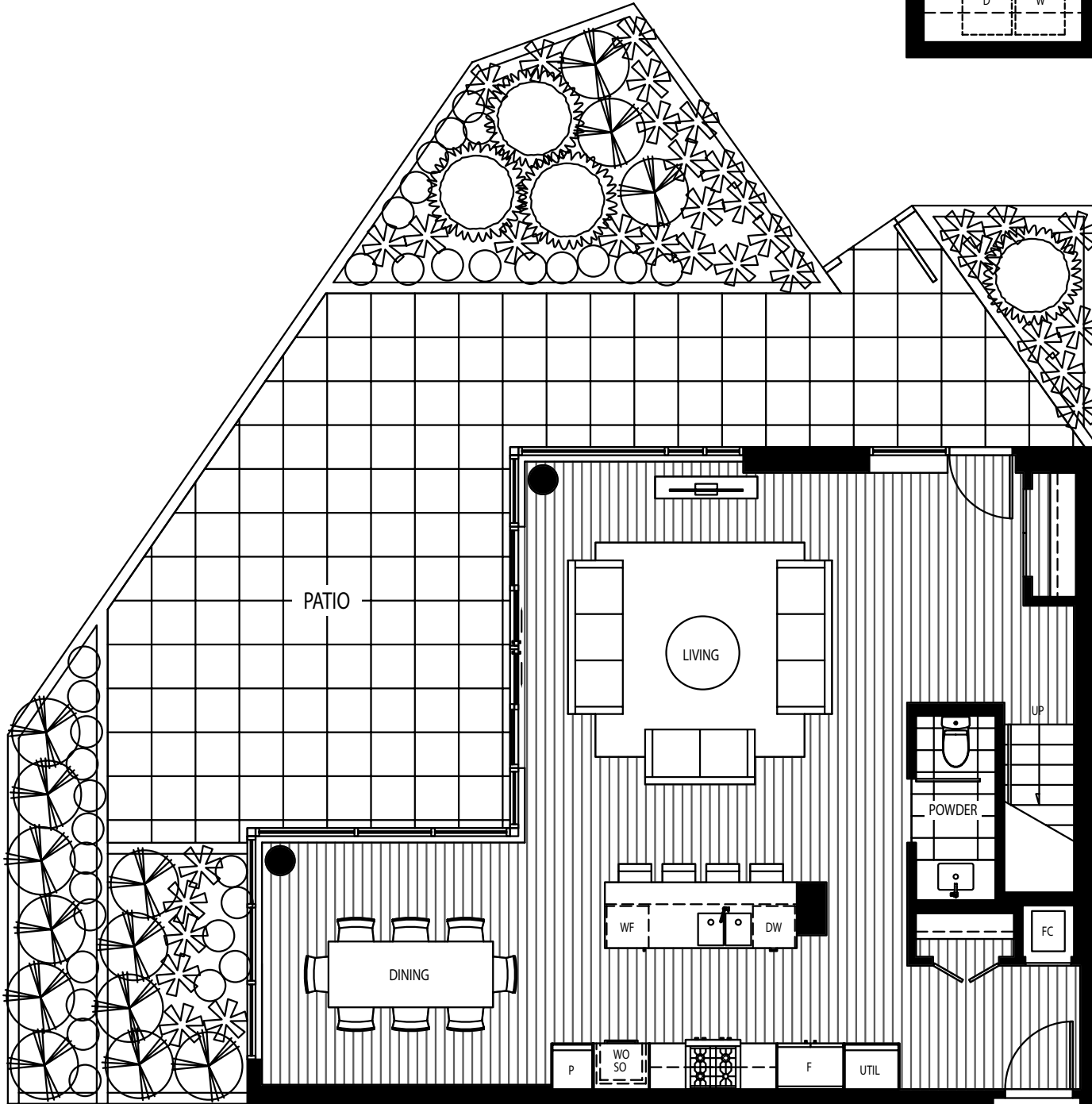
SEMIAH

OVERLOOKING
THE BAY

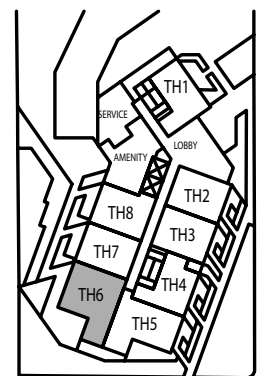
by MARCON

TOWNHOUSE 6

3 Bedroom
1,873 sq.ft.
Patio: 555 sq.ft.



LEVEL 2



LEVEL 1



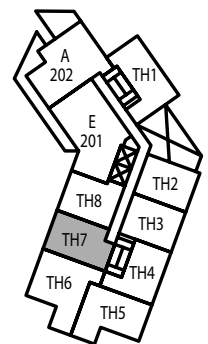
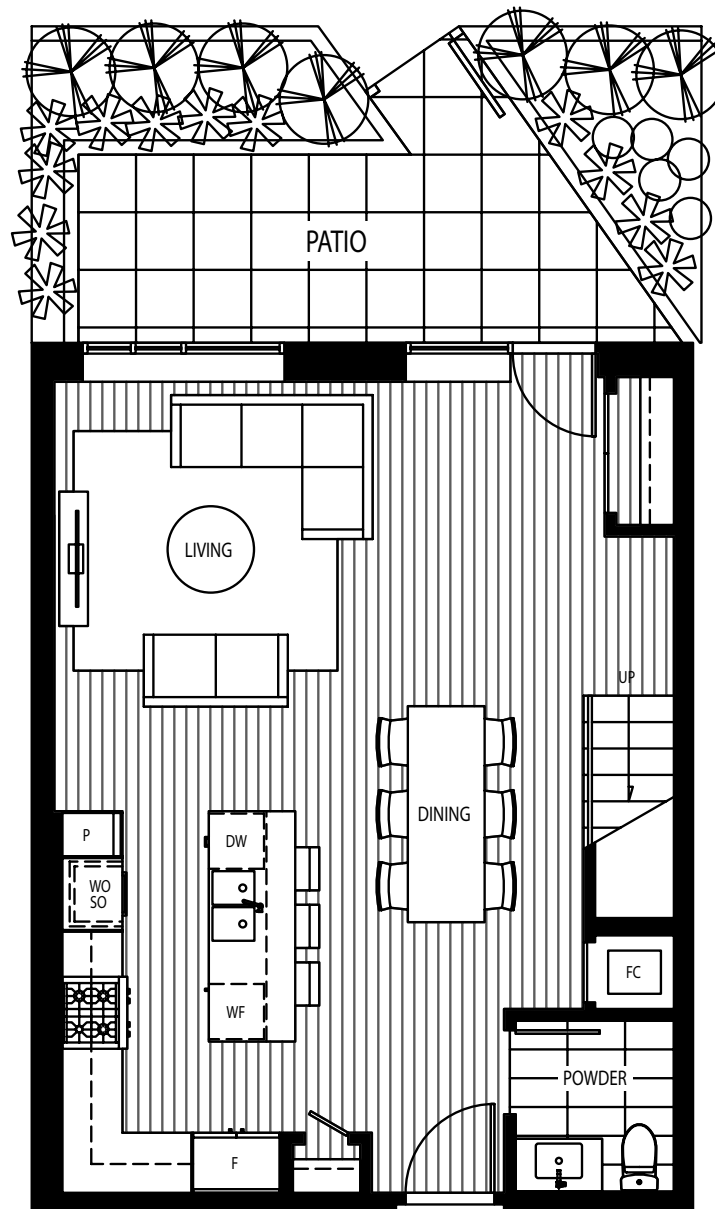
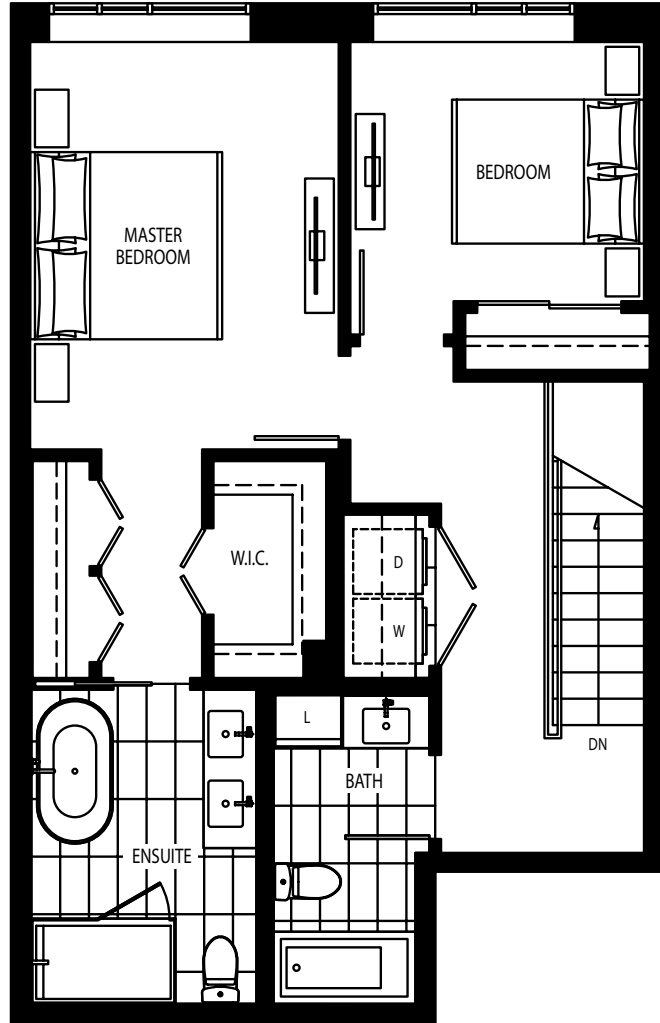
SEMIAH

by MARCON

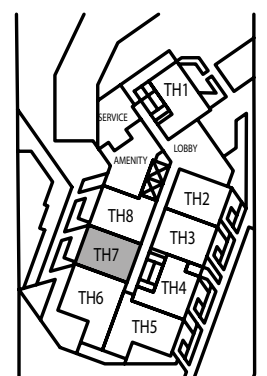
OVERLOOKING
THE BAY

TOWNHOUSE 7

2 Bedroom
1,432 sq.ft.
Patio: 138 sq.ft.



LEVEL 2



LEVEL 1



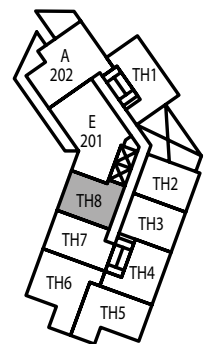
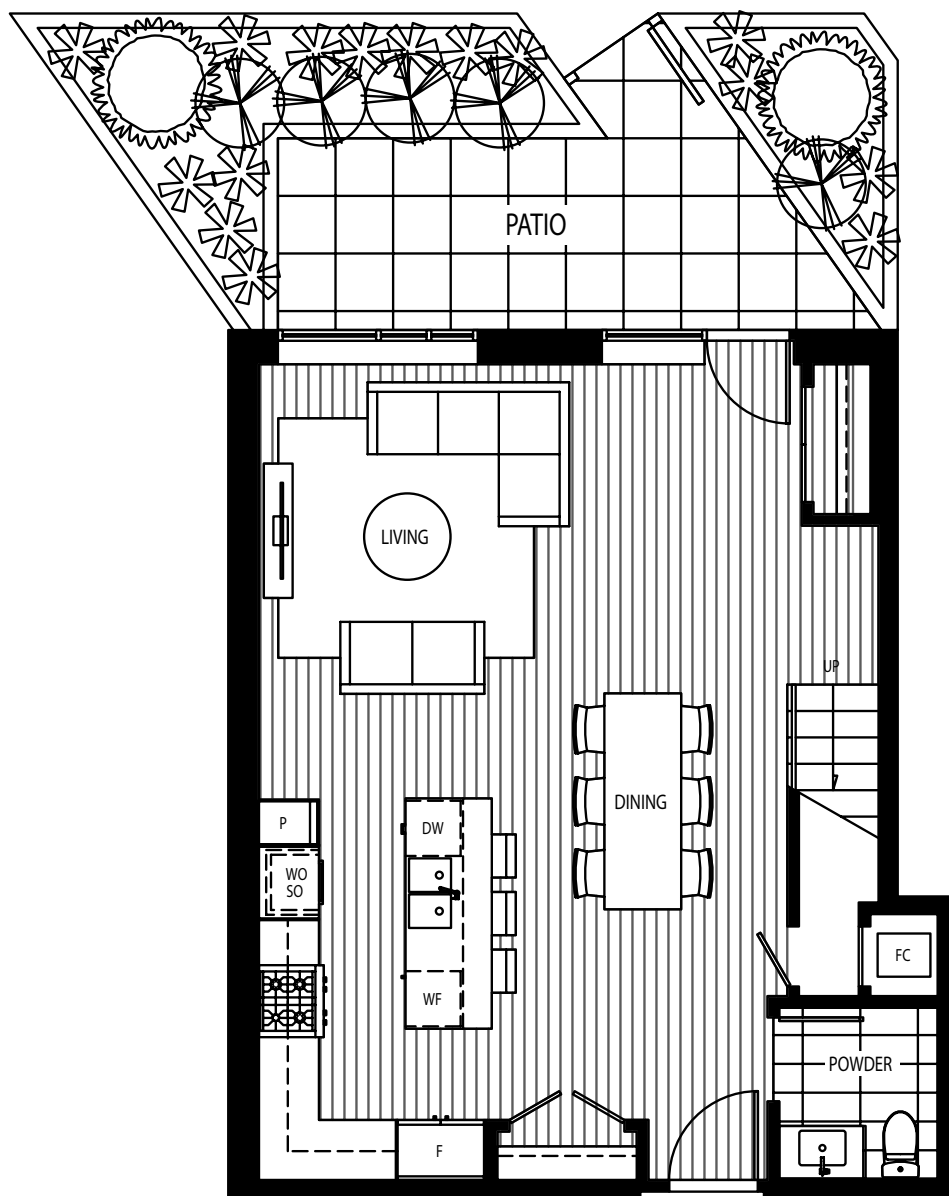
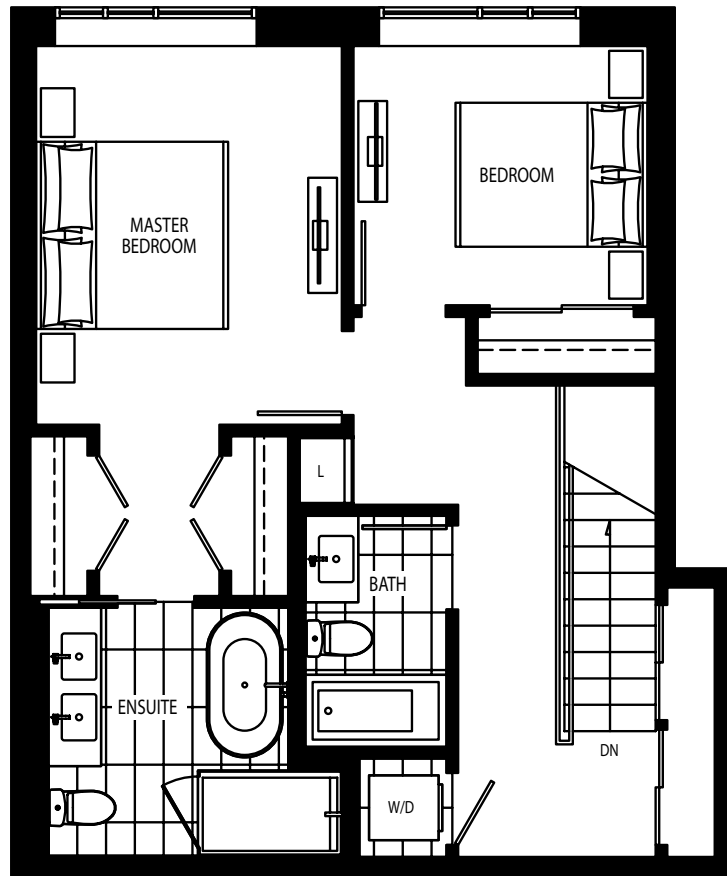
SEMIAH

by MARCON

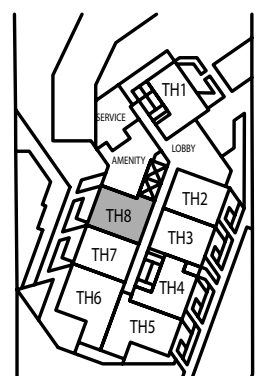
OVERLOOKING
THE BAY

TOWNHOUSE 8

2 Bedroom
1,410 sq.ft.
Patio: 139 sq.ft.



LEVEL 2



LEVEL 1



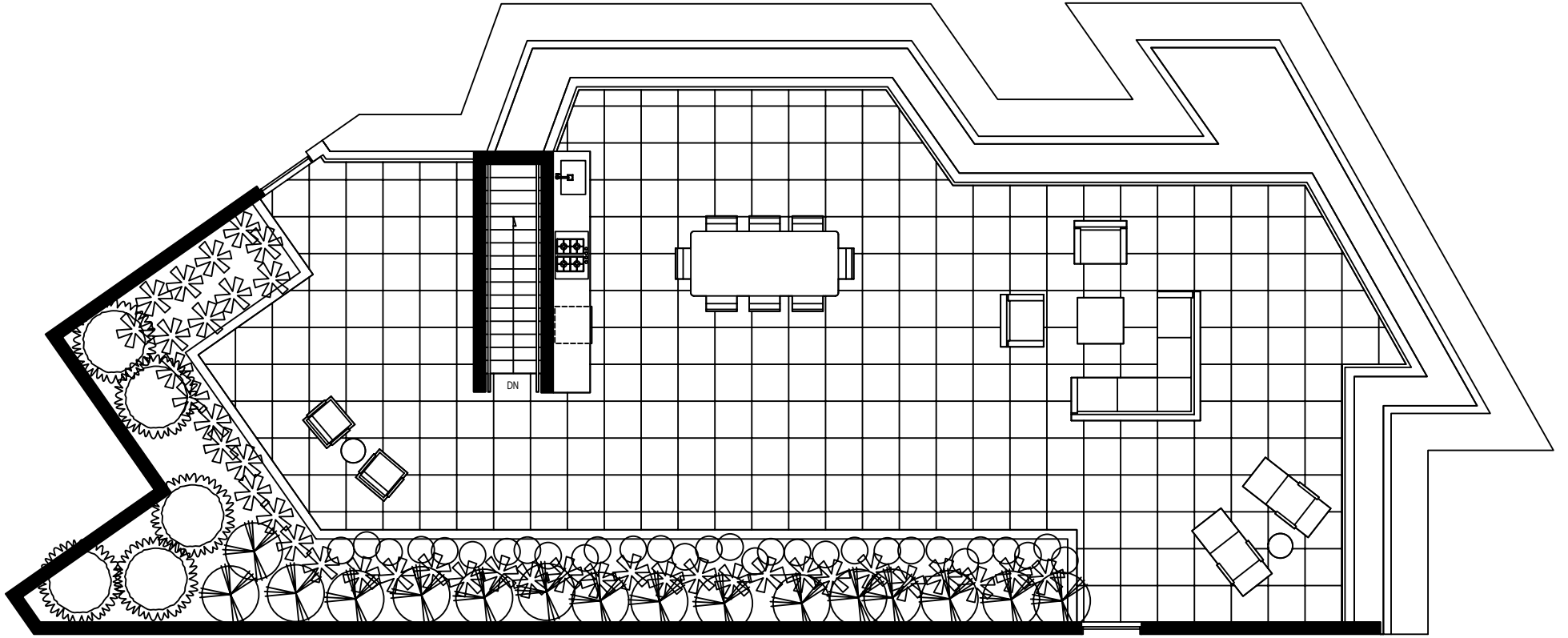
SEMIAH

by MARCON

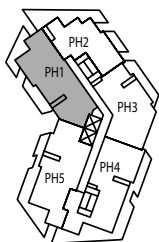
OVERLOOKING
THE BAY

PENTHOUSE 1

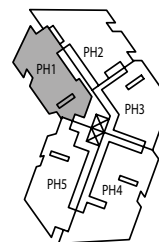
3 Bedroom + Den
1,744 sq.ft.
Balcony: 353 sq.ft.
Roof: 1,290 sq.ft.



ROOF TERRACE



LEVEL 14



ROOF TERRACE



The Developer reserves the right in its sole discretion to make modifications or changes to the building design, floor plans, project designs, specifications, finishes, features and dimensions. Square footages are approximate and have been calculated from architectural drawings. Actual final dimensions following completion of construction may vary from those set out herein. E. & O.E. Marcon Thrift (GP) Ltd.

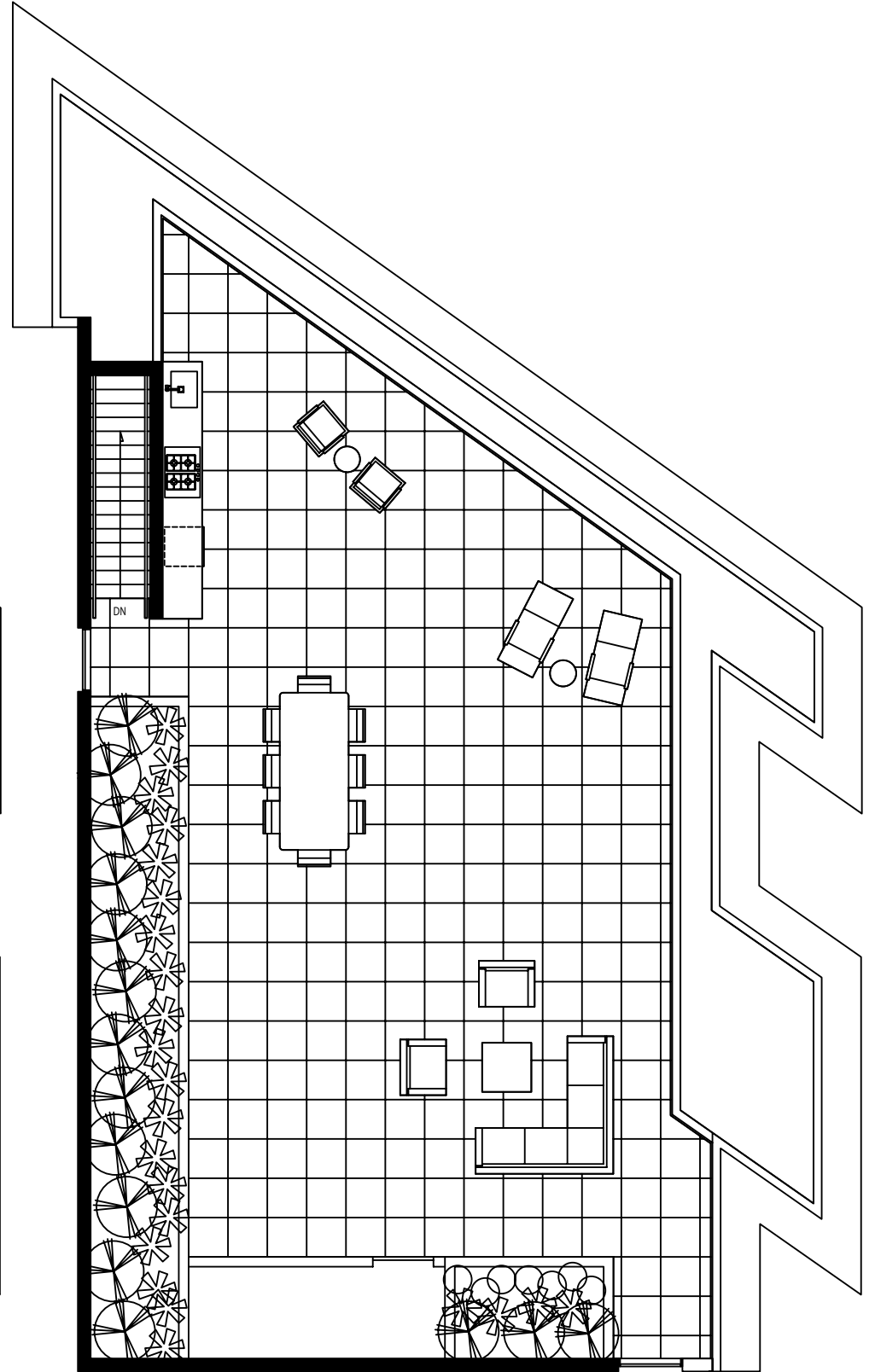
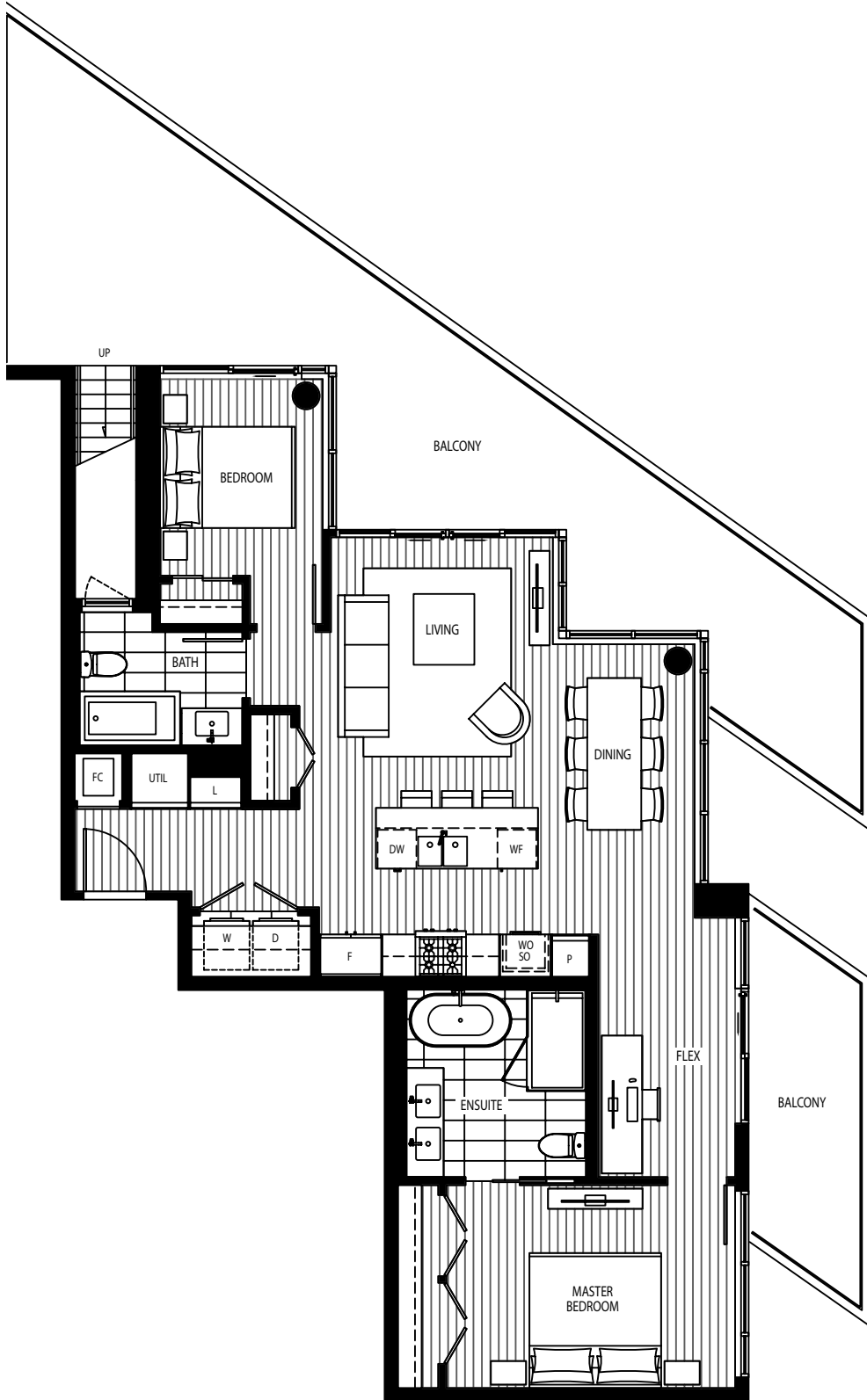
SEMIAH

OVERLOOKING
THE BAY

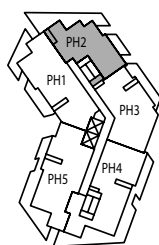
by MARCON

PENTHOUSE 2

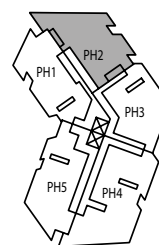
2 Bedroom + Flex
1,173 sq.ft.
Balcony: 572 sq.ft.
Roof: 1,188 sq.ft.



ROOF TERRACE



LEVEL 14



ROOF TERRACE



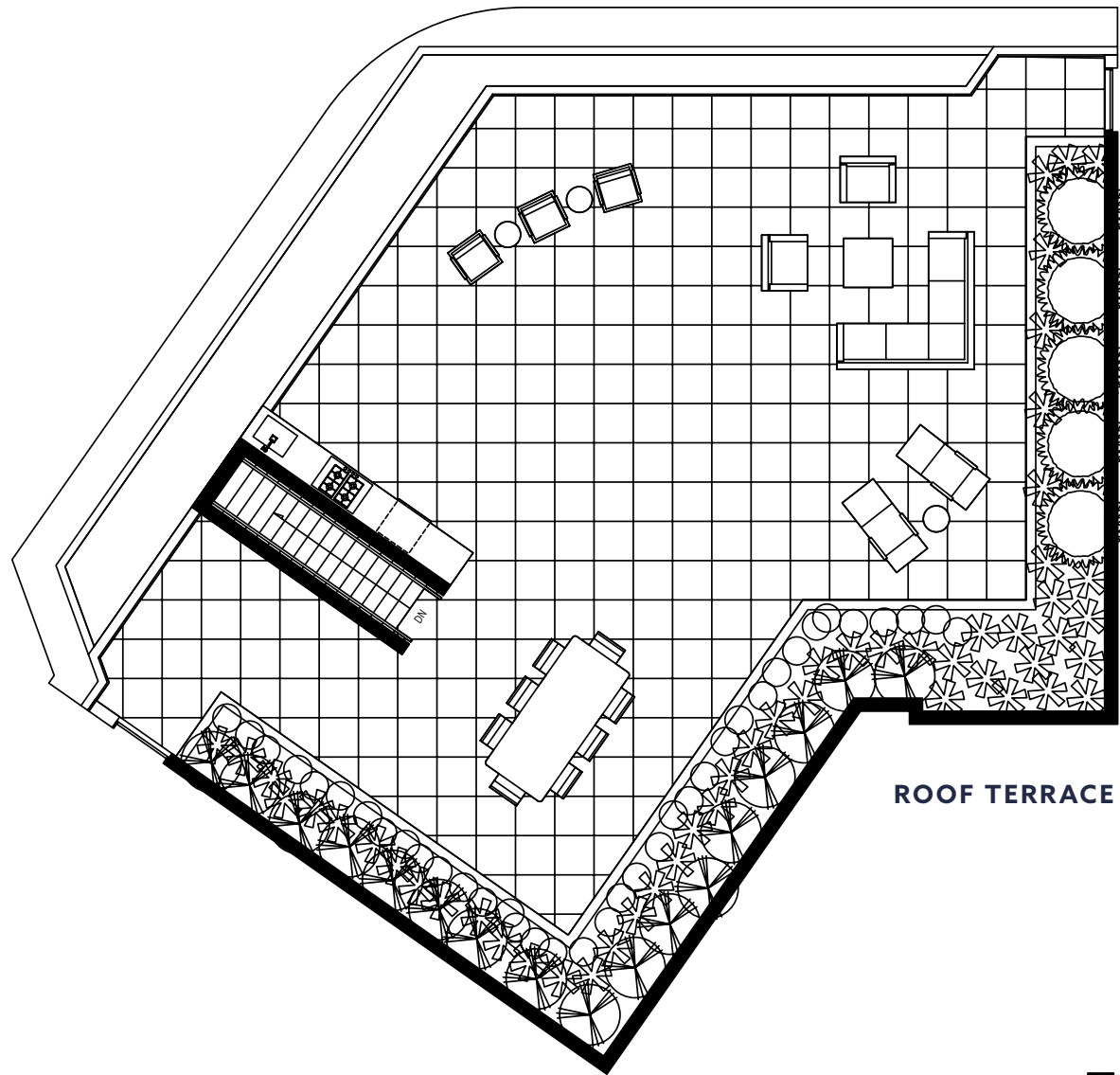
SEMIAH

by MARCON

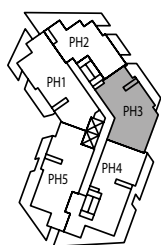
OVERLOOKING
THE BAY

PENTHOUSE 3

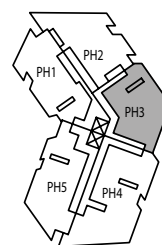
2 Bedroom + Den
1,550 sq.ft.
Balcony: 222 sq.ft.
Roof: 1,262 sq.ft.



ROOF TERRACE



LEVEL 14



ROOF TERRACE



The Developer reserves the right in its sole discretion to make modifications or changes to the building design, floor plans, project designs, specifications, finishes, features and dimensions. Square footages are approximate and have been calculated from architectural drawings. Actual final dimensions following completion of construction may vary from those set out herein. E. & O.E. Marcon Thrift (GP) Ltd.

SEMIAH

OVERLOOKING
THE BAY

by MARCON

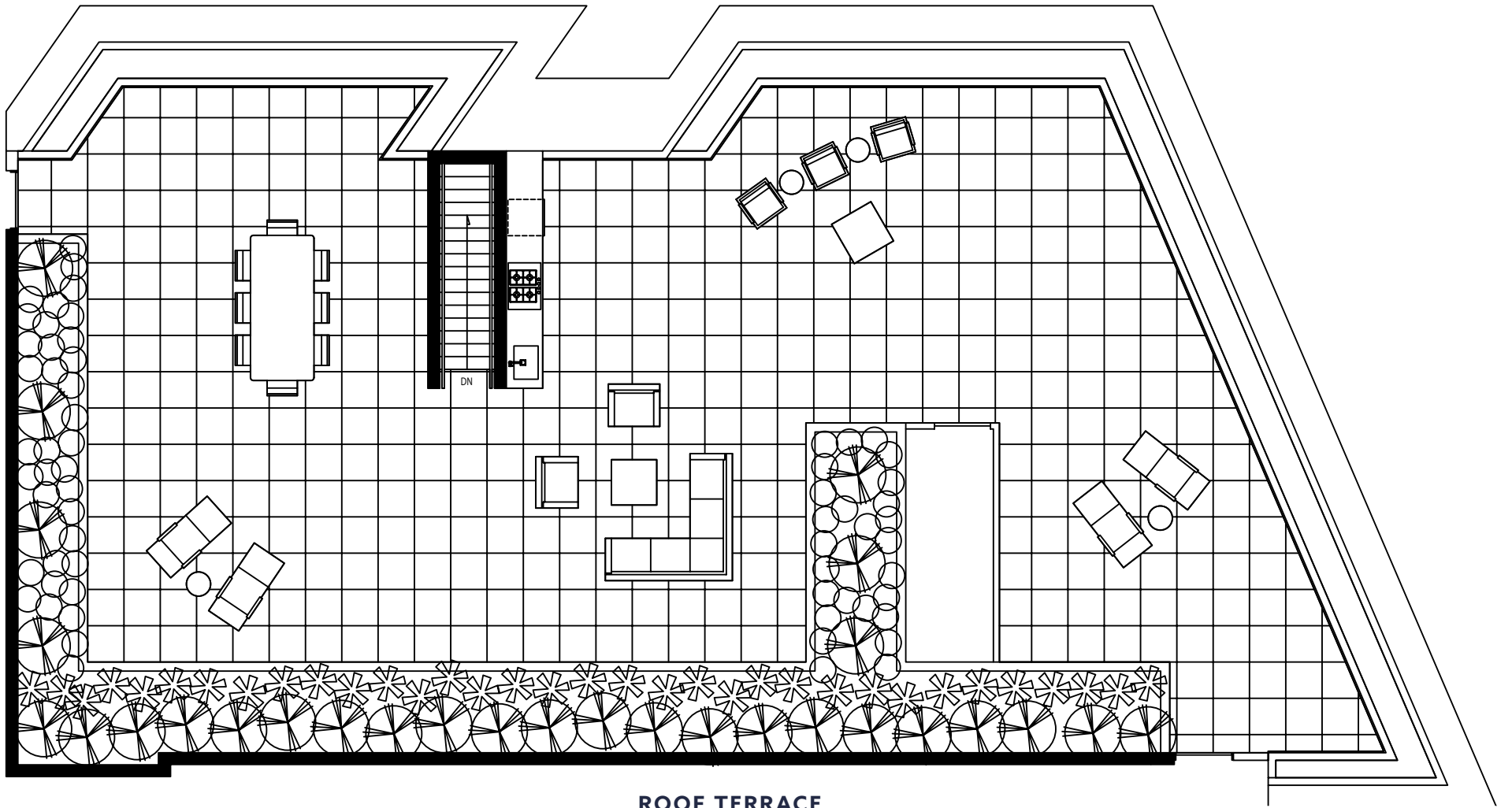
PENTHOUSE 4

3 Bedroom + Den

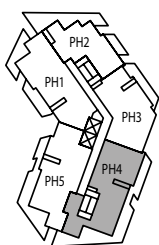
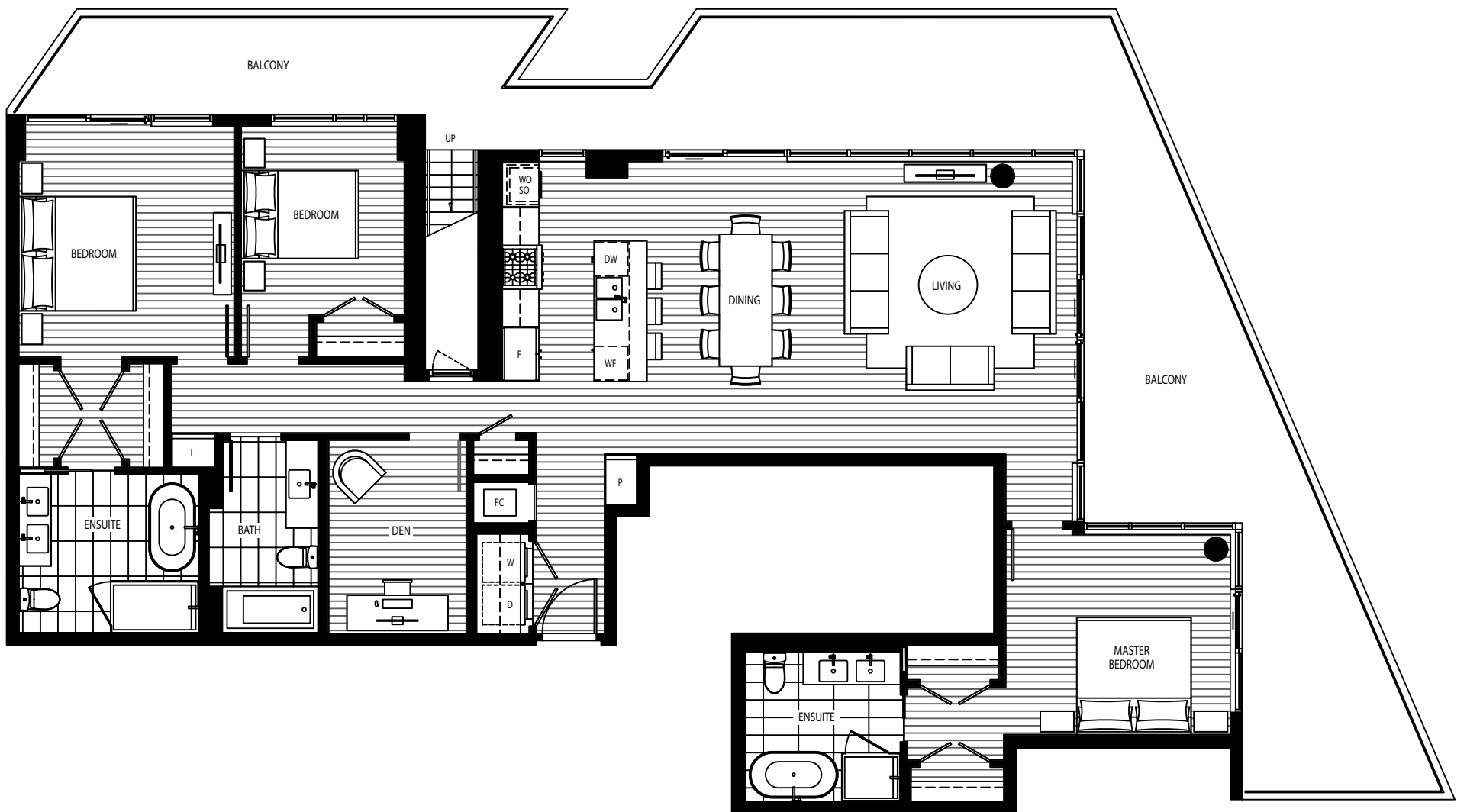
1,862 sq.ft.

Balcony: 775 sq.ft.

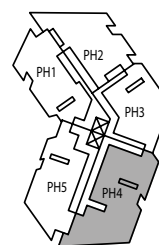
Roof: 1,838 sq.ft.



ROOF TERRACE



LEVEL 14



ROOF TERRACE



The Developer reserves the right in its sole discretion to make modifications or changes to the building design, floor plans, project designs, specifications, finishes, features and dimensions. Square footages are approximate and have been calculated from architectural drawings. Actual final dimensions following completion of construction may vary from those set out herein. E. & O.E. Marcon Thrift (GP) Ltd.

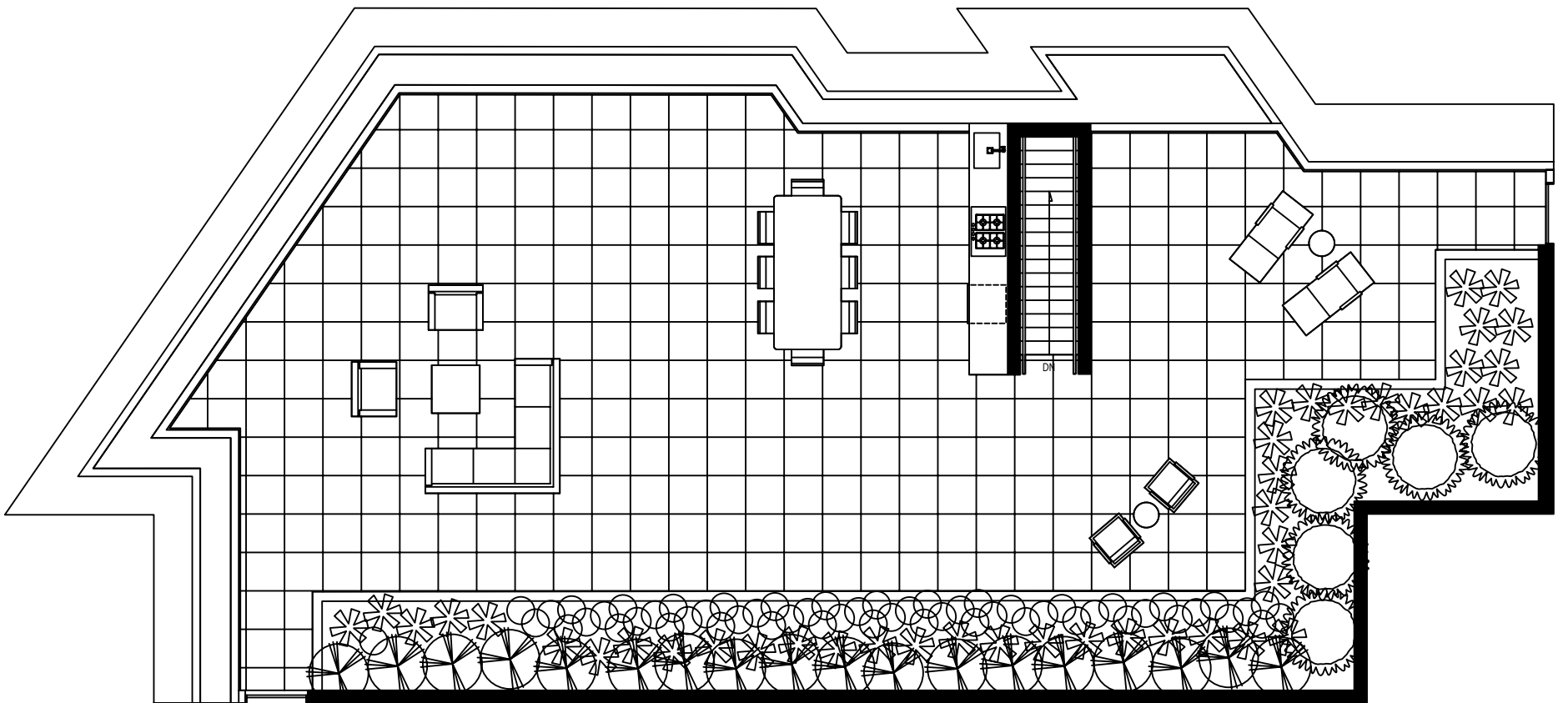
SEMIAH

OVERLOOKING
THE BAY

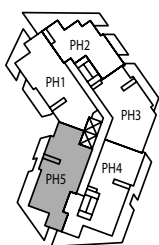
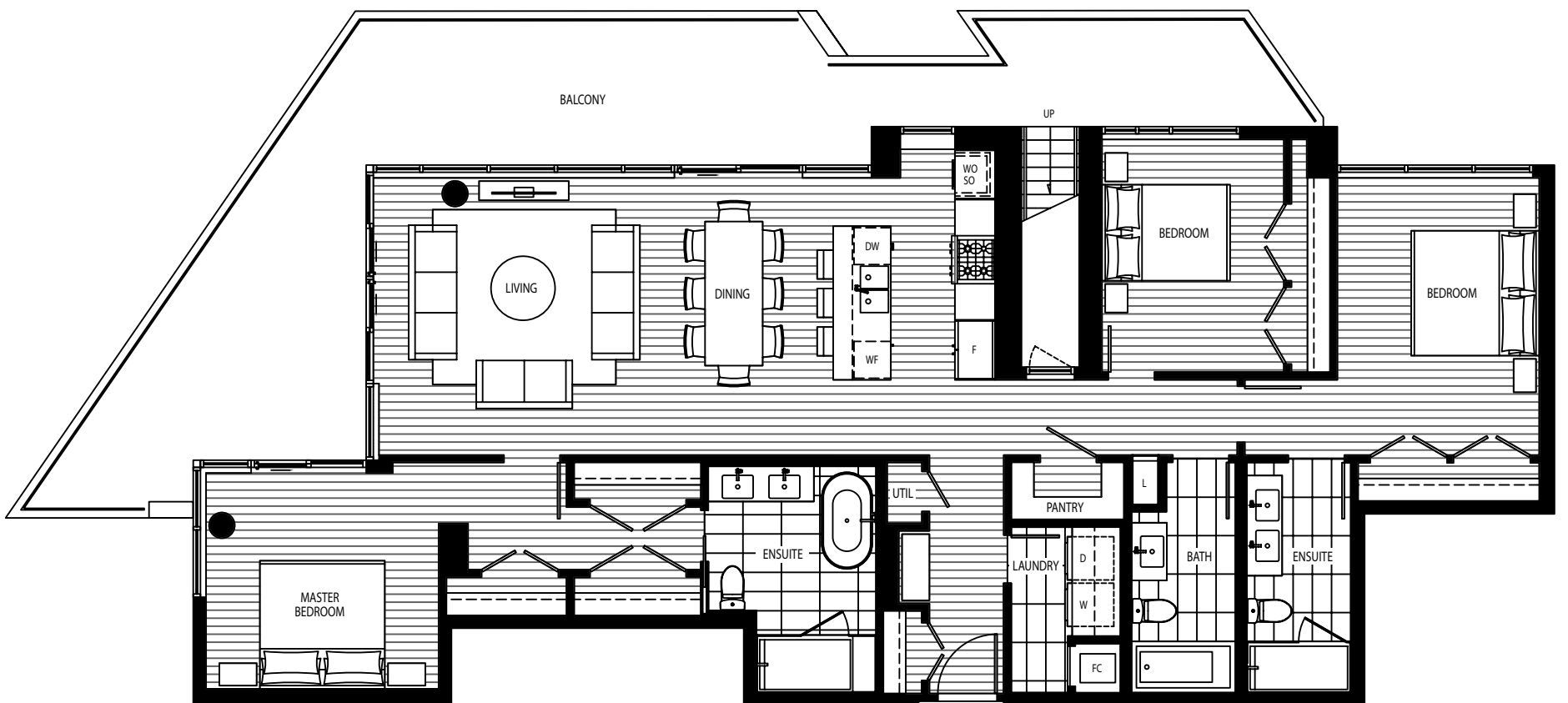
by MARCON

PENTHOUSE 5

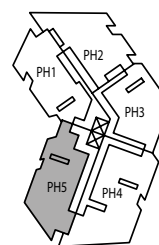
3 Bedroom
1,755 sq.ft.
Balcony: 551 sq.ft.
Roof: 1,435 sq.ft.



ROOF TERRACE



LEVEL 14



ROOF TERRACE



The Developer reserves the right in its sole discretion to make modifications or changes to the building design, floor plans, project designs, specifications, finishes, features and dimensions. Square footages are approximate and have been calculated from architectural drawings. Actual final dimensions following completion of construction may vary from those set out herein. E. & O.E. Marcon Thrift (GP) Ltd.

BRIGHT INTERIORS

- Contemporary light-filled interiors designed by Trepp Design Inc.
- High-efficiency heating and air conditioning system for year-round comfort
- Built-in USB charging connection in kitchen and bedrooms
- Two contemporary colour palettes to choose from
- Front-loading LG washer and dryer offer side-by-side convenience (most plans)
- Smart glass Low-E2 panoramic windows welcome an abundance of natural light and fresh air
- Spacious master bedrooms for ultimate relaxation
- Built-in wall safe, ideal for storing valuables and important documents
- Engineered hardwood flooring throughout in Pebble Oak or Beachside Oak (except 2nd level townhomes)
- Sleek roller shades on all windows ensure privacy
- Robust quality of 6" flat-stock baseboards and 2.5" flat-stock door trim

TASTEFUL KITCHENS

- Premium stainless steel appliances include:
 - 36" Bosch Benchmark™ Series integrated French-door refrigerator
 - 30" Wolf gas cooktop
 - 30" Bosch 800 Series speed combination oven
 - 24" Bosch integrated dishwasher
 - 30" Faber chimney-style range hood fan
 - 24" Marvel high-efficiency, dual-zone wine fridge

- Cabinetry is 3 panel-door style, custom stained: rift-cut white oak in Caramel or quarter cut ash veneer in Alpine. Soft-close hardware keeps life quiet, and birch veneer interiors feature dovetail construction
- Full-height pantries provide plenty of storage (select homes)
- Solid quartz countertops in Arctic White
- Hansgrohe Metris high-arc faucet with dual spray
- Polished slab backsplash in White Piracema granite or Morning Dawn marble
- Kruger double-bowl, under-mount sink stainless steel with in-sink disposal
- Recycling unit under sink with two pull-out bins
- Recessed pot lighting overhead enhanced by LED pucks under cabinets

ELEGANT BATHROOMS

ENSUITES

- Cabinetry is 3 panel-door style, custom-stained: rift-cut white oak in Caramel or quarter cut ash veneer in Cacao. Soft-close features keep it quiet, clean, and uncluttered, while birch veneer interiors feature dovetail construction
- Stone countertops in Arctic White
- Hansgrohe Metris widespread vanity faucet in chrome
- Freestanding, oval-shaped one-piece tub (some plans) or Simplicity Pure tub with marble tiled apron
- Marble floor and tile surrounds for tub and shower in Smoked Grey or Crema Fedora
- Duravit under-mount sink

- Walk-in shower with chrome Hansgrohe Raindance hand shower and rainhead shower (some plans)
- Hansgrohe Raindance chrome showerhead in tub/shower combinations (some plans)
- Soaker tub with chrome Hansgrohe Metris spout
- Frameless glass shower enclosure
- Medicine cabinet with wood veneer accent shelving
- Caroma Somerton Smart dual-flush toilet
- Kartners towel bar, tissue holder, and other bathroom accessories in polished chrome

MAIN BATH

- Duravit under-mount sink
- Marble floor and tile surrounds both the bathtub and shower in Smoked Grey or Crema Fedora
- Hansgrohe Raindance chrome showerhead in tub/shower combinations (some plans)
- Caroma Somerton Smart dual-flush toilet
- Kartners towel bar, tissue holder, and other bathroom accessories in polished chrome

POWDER ROOM

- Feature wall mosaic of Bianco Carara marble tile, chevron pattern in white
- Vanity has above-countertop sink
- Caroma Somerton Smart dual-flush toilet

GREEN INITIATIVES

- Breathe easier: Improved indoor air quality with low VOC paints and flooring throughout
- Smart Location: pedestrian-friendly community with easy access to transit; efficient site-planning for compact housing; and a diverse range of housing/ floor plan types
- Water conservation: low-flow toilets, showerheads and faucet aerators, as well as drought-tolerant landscaping
- Energy conservation: high-efficiency domestic hot water, heating and cooling systems; energy-efficient lighting in common areas; Energy Star® windows, refrigerator, dishwasher and clothes washer
- Reduced emissions: charge your electric vehicles with pre-wired power for select parking stalls in the underground garage
- Recycling program: recycling facilities for residents; recycled materials used in construction; demolition material and up to 75% of construction waste recycled
- Extra-green efforts: native plantings to reduce the need for pesticides and fertilizers; erosion control and vegetation safeguards; soil control and bulk excavating to reduce site disturbance; and environmental workshops with trades and suppliers

CONNECTED & CONVENIENT

- Parks, beaches, transit, groceries and numerous other amenities and services within walking distance
- Telus Future Friendly Homes® come technology-ready with the Telus Smart Hub for easy and secure WiFi connectivity and Internet access, CAT5e wiring and multiple pre-wired connections for high-speed cable and Internet
- Complimentary Telus TV and High-Speed Internet for one year
- Secure bicycle storage room
- Storage locker for each home in the underground garage

EXTERIOR FEATURES

- Contemporary design by the innovators at Arno Matis Architecture Inc.
- Construction by Marcon — one of the province's leading builders, with over 10,000 homes in their portfolio and 32 years of expertise
- Oversized Low-E2 glazed windows to optimize sunlight, fresh air and views
- Generous patios, decks and terraces to extend your living space outdoors
- Quality contemporary materials including full height glazing and offset balconies to maximize natural light
- Secure, well-lit underground parking with emergency safe stations, fob and key access and video surveillance
- Secure lobby with video surveillance, enterphone with security camera, and fob and key access
- Programmable elevator to restrict floor access
- State-of-the art fire protection system features centrally monitored sprinklers and smoke detectors in every home
- Comprehensive new home warranty including two years for materials, five years for building envelope and ten years for structural components
- Marcon's dedicated, after-sale customer service team makes living in your home enjoyable and carefree