

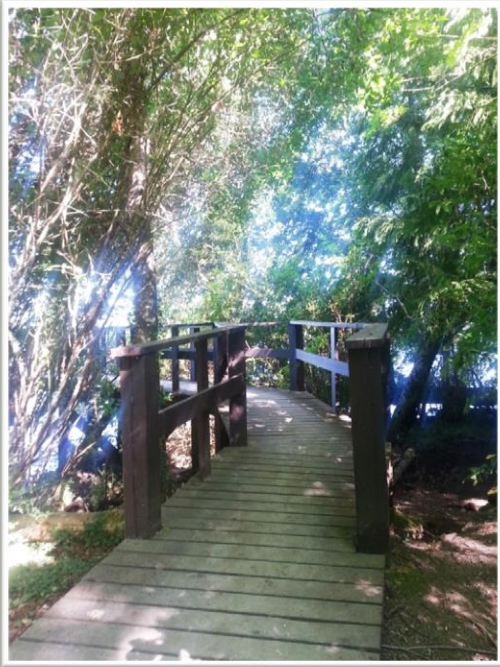
Old Mill Park

Location: Recreation Road, Shawnigan Lake, BC

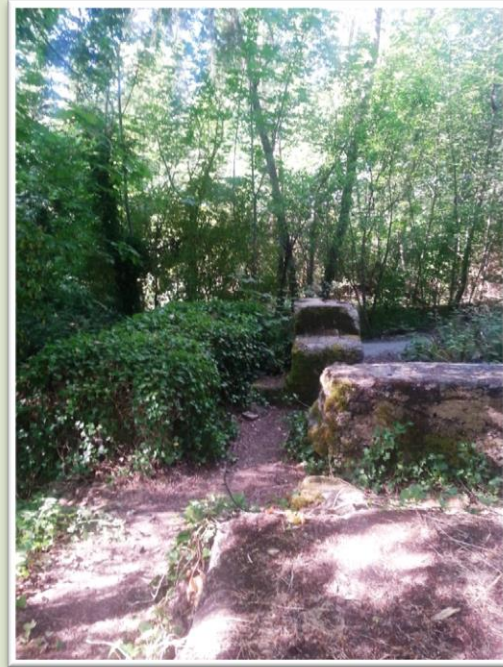
Formally Recognized: 2015/08/12

Other Names: Not applicable

Construction Dates: Acquired by CVRD in 1988, features & trails added since.



Lookout feature at Old Mill Park



Old foundation stones in Old Mill Park

Statement of Significance for Old Mill Park

Description of Historic Place

Old Mill Park is a municipally-owned 17.5 acre lakefront nature park located off Recreation Road in Shawnigan Lake, BC. This historic park consists of forested areas and features lookouts, bridges, trails, lake access points, picnic areas, a playground, and a small beach.

Heritage Value

The heritage value of Old Mill Park lies in its historical, social, and scientific qualities. The park's association with the early economic development of the community is highly significant. Old Mill Park's current uses as a park and as an ecosystem have immense value to the community.

Old Mill Park has been used as parkland by the Shawnigan Lake community since 1970, first as a provincial park and then as a community park since 1988. This historic place has provided the community with an easily-accessible recreational and social gathering place, valued for its safe and family-orientated character.

Old Mill Park is directly associated with the early economic development of the Shawnigan Lake area, as it is on the site of the Shawnigan Lake Lumber Company Sawmill and its accompanying town site. The Shawnigan Lake Lumber Company operated on this site from 1891 to 1945, after which a fourth fire destroyed the third mill and the company left the site for good. During its operations, the Shawnigan Lake Lumber Company provided work for many members of the community, aiding to the development of the Shawnigan Lake community.

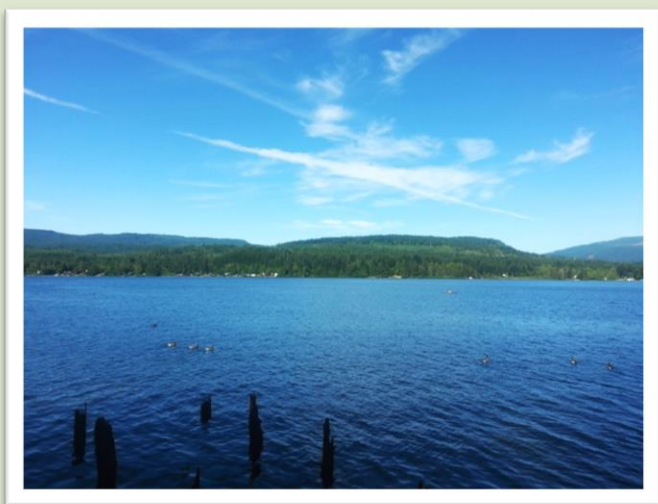
There is significant historic value in remnants of the old sawmill that can be found within the park. These historic artifacts include concrete foundation stone, old pilings, and a log chute. All of these physical pieces of history can be viewed and appreciated while exploring Old Mill Park.

Scientific value can be found in Old Mill Park's riparian zones, as the combination of mature trees, shrubbery, grasses and water within the park creates a dynamic ecosystem. This ecosystem is home to many forms of wildlife, including birds and small mammals. It is significant that this park aims to provide a low human-impact ecosystem in a developed area.

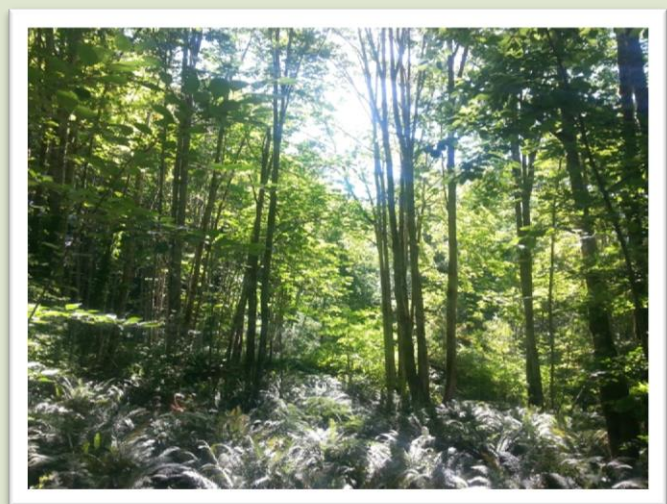
Character-Defining Elements

Key elements that define the heritage character of Old Mill Park include:

- Location on the original Shawnigan Lake Mill site
- Historic evidence from the Shawnigan Lake Mill, including remnants of the foundation, old pilings, and a log chute
- Forested areas with trails
- Ongoing use as a community park, and the elements that support that use including a playground, beach, lookouts and bridges
- Elements that support the natural values of the park including the native mature trees, shrubs, plants, and wildlife



View of old pilings from Old Mill Park lookout



Native mature trees, shrubs, and plants in Old Mill Park

Historical Information

Timeline

- 1891. Shawnigan Lake Lumber Company begins operation on what is now Old Mill Park.
- 1945. Shawnigan Lake Lumber Company leaves site after fourth fire destroys mill.
- 1970. The site becomes a provincial park.
- 1988. The site becomes a community park.



View from Old Mill Park beach

Current Information

Function

- Old Mill Park is a municipally-owned community nature park that is maintained by the CVRD

Construction

- No recent construction

Heritage Status

- Pending Provincial Recognition