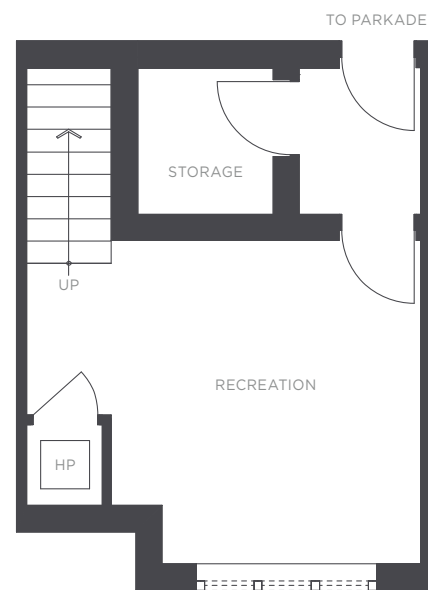




THE RESIDENCES

— AT NOBEL PARK —

DRAFT

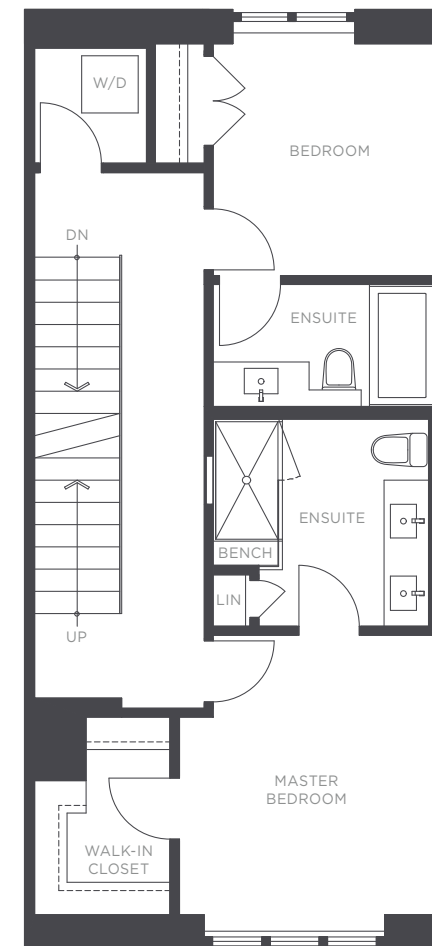


WINDOW FOR HOME #6, 7, 11, 14, 15, 18, 19

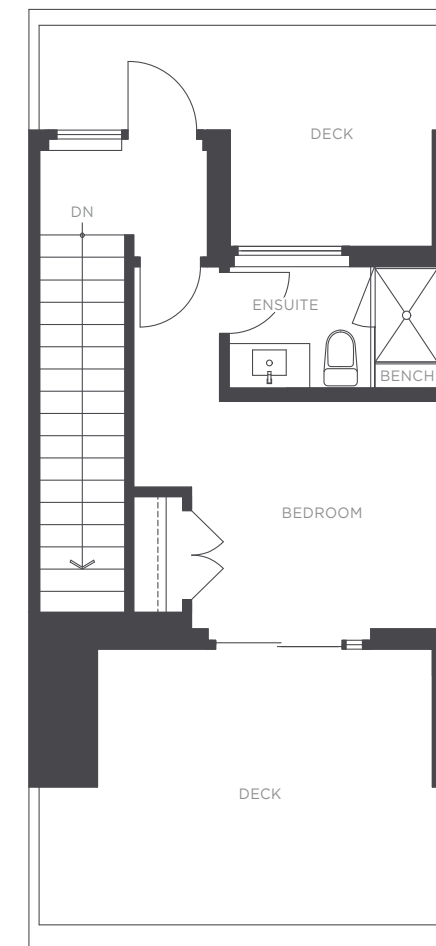
LOWER (LAYOUT VARIES)



MAIN



SECOND



UPPER

TOWNHOME B

3483 ROSS DRIVE

3 BEDROOM
3.5 BATHROOM
APPROX. 2,008 - 2,013 SQ. FT.